

# LINCOLN COSMOPOLITAN 1949 thru 1951 BODY PARTS

Series 9H, 0H, and 1H. ALL BODY STYLES

## Front Bumper

All Models

See Fig. 1

<b>1 LOWER CENTER BUMPER BAR</b>	
7EH-17752—1949 .....	10.11
0L-17752—1950 .....	5.21
1L-17752—1951 .....	7.56
<b>2-3 BUMPER IMPACT BAR</b>	
7EH-17756—1949 (right*) ...	36.75
0L-17756—1950 (right*) .....	36.75
1L-17756—1951 (right*) .....	36.75
<b>4 UPPER IMPACT BAR</b>	
7EH-17762—1949 .....	18.96
<b>5-6 BUMPER GUARD</b>	
8H-17996—1949-50 (right*) ..	10.75
1L-17996—1951 (right*) .....	15.50
<b>7-8 BUMPER OUTER HANGER</b>	
7EH-17754-A—1949, 3 hole type (right*) .....	4.43
7EH-17754-B—1949, 5 hole type (right*) .....	2.91
0L-17754—1950 (right*) .....	2.43
1L-17754—1951 (right*) .....	4.21

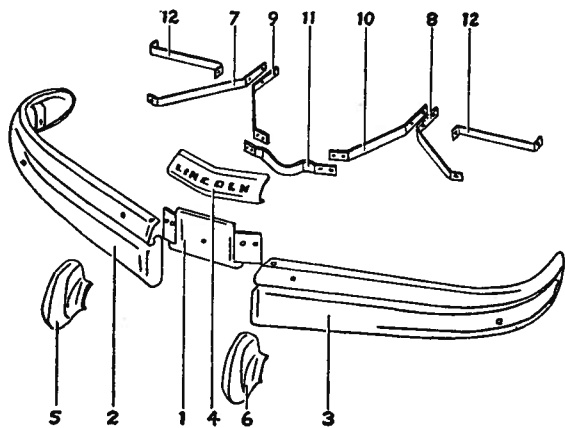


Fig. 1—Front Bumper, All Models

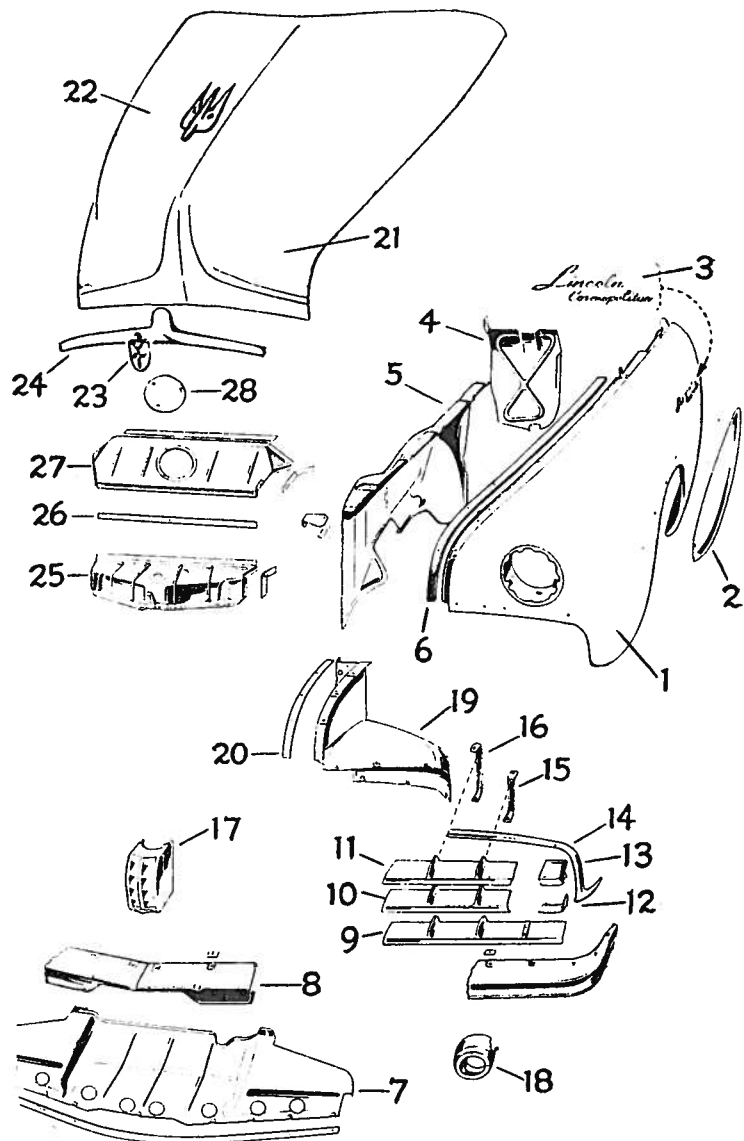


Fig. 2

## Grille & Front End Sheet Metal

<b>9-10 BUMPER INNER HANGER</b>	
7EH-17766-A—1949, 3 hole type (right*) .....	3.00
7EH-17766-B—1949, 5 hole type (right*) .....	3.00
0L-17766—1950 (right*) .....	3.00
1L-17766—1951 (right*) .....	8.60
<b>11 CENTER LOWER IMPACT BAR REINFMT.</b>	
7EH-17859—1949 .....	2.79
0L-17859—1950 .....	2.57
<b>12 BUMPER END TO FRAME BRACE</b>	
0L-17784—1950 (right*) .....	1.71
1L-17784—1951 (right*) .....	2.90

1949 Models Only

See Fig. 2

<b>1 FRONT FENDER ASSY.</b>	
8H-16005—1949 (right*) .....	65.95
<b>2 FRONT FENDER MLDG.</b>	
8H-16196—1949 (right*) .....	23.02
<b>3 FENDER SIDE MEDALLION</b>	
8H-16724-B—1949, "Lincoln" ..	1.40
8H-16724-C—1949, "Cosmopolit- tan" .....	1.40
<b>4 FENDER BRACKET &amp; BRACE ASSY.</b>	
7EH-16094—1949 (right*) .....	4.45

<b>5 FENDER APRON ASSY.</b>	
8H-16054-A—1949 (right*) ...	17.75
<b>6 FENDER TO AIR DEFLECTOR ANTI-SQUEAK</b>	
8H-8403—1949 .....	.28
<b>7 RAD. SPLASH SHIELD</b>	
8H-8209—1949 .....	12.00
<b>8 FRONT BUMPER STONE DEFLECTOR</b>	
8H-17744—1949 .....	23.30
<b>9 SIDE LOWER GRILLE</b>	
7EH-8150—1949 (right*) .....	17.25
<b>10 INTERMEDIATE SIDE GRILLE</b>	
7EH-8172—1949 (right*) .....	15.10

\* Opposite side one part number higher

**BODY PARTS 1949 thru 1951 COSMOPOLITAN LINCOLN**

**Series 9H, 0H and 1H. ALL BODY STYLES**

11 UPPER RAD. GRILLE 7EH-8204—1949 (right*) ....	17.25	4 GRILLE AIR DEFL. TO RAD. SUPT. ANTI-SQUEAK 8H-8404—1950-51 .....	.30	15 LOWER GRILLE BAR 0L-8150—1950 (right*) .....	17.25
12 OUTER SIDE INTM. GRILLE 7EH-8378-B—1949 (right*)...	1.70	5 RAD. AIR DEFL. UP. PANEL 7EH-8308-B—1950-51 .....	3.88	1L-8150—1951 (right*) .....	15.10
13 GRILLE UP. BAR EXTEN. 7EH-8376—1949 (right*) ....	2.95	6 HOOD CATCH TO AIR DEFL. ANTI-SQUEAK 8H-8413—1950-51 .....	.13	16 GRILLE LOWER BAR EXTEN. 0L-8376—1950 (right*) .....	2.15
14 FENDER INNER MLDG. 8H-16210—1949 (right*) .....	8.45	7 FENDER TO GRILLE AIR DEFL. ANTI-SQUEAK 8H-8403—1950 .....	.28	1L-8376—1951 (right*) .....	6.80
15 RAD. OUTER SUPT. 7EH-8496—1949 .....	.64	8 SEE ITEM NO. 1		17 RAD. GRILLE OUTER SUPT. 0L-8454—1950 .....	.30
16 RAD. GRILLE INNER SUPT. 7EH-8447—1949 .....	.85	9 FENDER CENTER MLDG. 8H-16196—1950 (right*).....	23.02	1L-8454—1951 .....	.09
17 RAD. CENTER GRILLE 7EH-8241—1949 .....	20.75	1H-16003—1951 (right*) .....	5.60	18 LOWER GRILLE BAR EXTEN. 0L-8230—1950 (right*) .....	9.50
18 GRILLE ROADLAMP HOUSING 7EH-8206-B—1949 (right*)...	7.88	10 FENDER SIDE MEDALLION "COSMOPOLITAN" 0H-16724—1950-51 .....	2.15	1L-8230—1950 (right*) .....	3.45
19 RAD. GRILLE AIR DEFLECTOR 8H-8310-A—1949 (right*) ...	15.00	11 ROCKER PANEL BUFFER MLDG. 0H-7310176—1950-51 (right*)..	14.65	19 BUMPER STONE DEFL. PANEL 0L-17818—1950 (right*) .....	6.40
20 GRILLE AIR DEFL. TO RAD. SUPT. 8H-8405—1949 .....	.30	12 HOOD CATCH SUPT. 0L-16774—1950, 6 slots .....	5.90	1L-17818—1951 (right*) .....	3.90
21 HOOD ASSY. 8H-16612-B—1949 .....	87.95	13 UPPER GRILLE BAR 0L-8204—1950 .....	36.25	20 RAD. SPLASH SHIELD 0L-8209—1950 .....	12.00
22 HOOD TOP CENTER ORNAMENT 8H-16850—1949 .....	14.80	1L-8204—1950 .....	32.75	1L-8209—1951 .....	12.00
23 RAD. GRILLE ORNAMENT 5EH-16607—1949 .....	3.22	14 RAD. GRILLE INNER SUPT. 0L-8447—1950 .....	.35	21 FENDER TO AIR DEFL. ANTI-SQUEAK 8H-8403—1950 .....	.28
24 HOOD LOWER FRONT ORNAMENT 7EH-8216—1949 .....	11.05	1L-8428—1951 (right*) .....	.35	1L-8403—1951 .....	.20
25 HOOD LATCH SUPT. 7EH-16774—1949 .....	5.90			22 BUMPER STONE DEFL. 0L-17744—1950 .....	23.30
26 RAD. AIR DEFL. LOWER ANTI-SQUEAK 8H-8412—1949 .....	.30			1L-17744—1951 .....	23.30
27 UPPER AIR DEFLECTOR PANEL 7EH—8308-B—1949 .....	4.40			23 GRILLE AIR DEFL. 0L-8310—1950 (right*) .....	11.21
28 RAD. AIR DEFL. UP. COVER PLATE 7EH-8346—1949 .....	.28			1L-8310—1951 (right*) .....	18.00
				24 FENDER APRON TO GRILLE DEFL. ANTI-SQUEAK 8H-8405—1950-51 .....	.30

**Grille & Front End Sheet Metal**

1950-51 Models

See Fig. 3

1 FRONT FENDER ASSY. 0H-16005-A—1950, exc. 72C (right*) .....	65.95
0H-16005-A—1950, 72C (right)	65.95
1H-16005—1951 (right*) .....	65.95
2 FENDER APRON ASSY. 0H-16054—1950-51 (right*) ..	17.25
3 RAD. AIR DEFL. UP. COVER PLATE 7EH-8346—1950-51 .....	.28

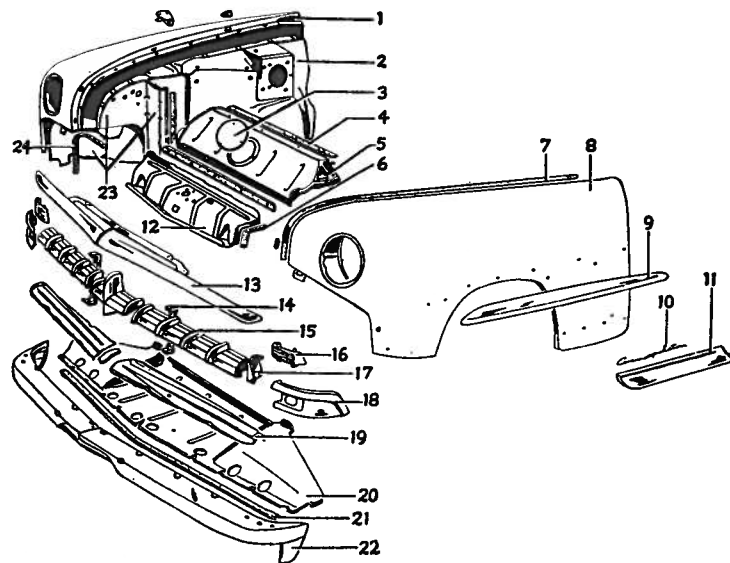


Fig. 3—Grille and Front End Sheet Metal—All Models—1950

\* Opposite side one part number higher

# LINCOLN COSMOPOLITAN 1949 thru 1951 BODY PARTS

Series 9H, 0H and 1H. ALL BODY STYLES

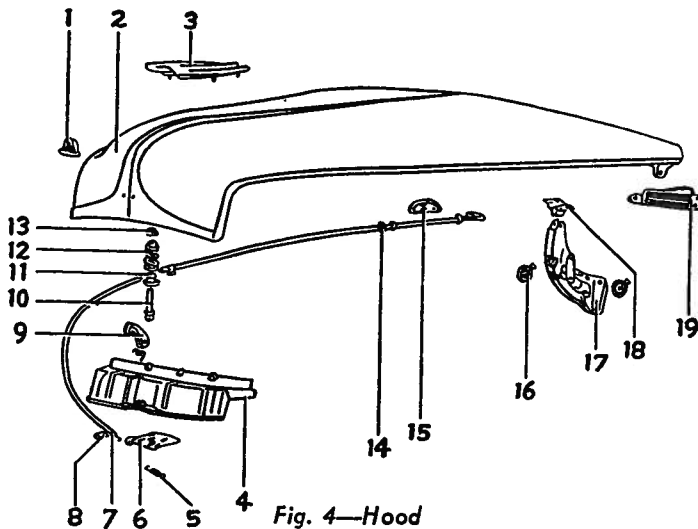


Fig. 4—Hood

## Hood

1950-51

See Fig. 4

1 HOOD FRONT ORNAMENT 0L-16637—1950-51 .....	2.24
2 HOOD ASSY. 0H-16612-A—1950 .....	87.95
1H-16612—1951 .....	87.95
3 HOOD TOP CENTER ORNAMENT 8H-16850—1950 .....	14.80
1L-16850—1951 .....	11.55
4 HOOD CATCH SUPT. 0L-16774—1950, 6 slots .....	5.90
1L-16774—1951, 8 slots .....	5.78
5 HOOD LATCH TRIGGER SPRING 7EH-16921—1950-51 .....	.06
5 HOOD LATCH ASSY. 7EH-8162—1950-51 .....	1.24
7 HOOD CATCH CONTROL CABLE 8H-16916—1950-51, 76" long ..	1.64
8L-16916—1950-51, 72" long ..	1.64
3 HOOD LOCK CABLE CLIP 16H-16899-A—1950-51 .....	.07
9 HOOD AUXILIARY CATCH HOOK 0L-16892—1950-51 .....	.91
10 HOOD LOCK DOWEL 16H-16929-B—1950-51 .....	.76
11 HOOD LOCK SPRING GUIDE 16H-16927—1950-51 .....	.28
12 HOOD LOCK SPRING 8H-16925—1950-51 .....	.12
13 HOOD LOCK DOWEL NUT 33929-S7—1950-51, ½"-20 ....	.05
14 HOOD CATCH CABLE GROMMET 353247-A1S—1950-51 .....	.08

15 INST. PANEL HOOD CONTROL BRKT. 8H-16930—1950-51 .....	.33
16 HOOD HINGE SPRING 7EH-16812—1950 .....	.53
0H-16812—1951 .....	.52
17 HOOD HINGE ASSY. 0H-16800—1950-51 .....	5.50
18 HOOD HINGE UP. BRKT. 7EH-16678—1950-51 .....	.17
19 HOOD ROLLER GUIDE 8H-16652—1950-51 .....	.69

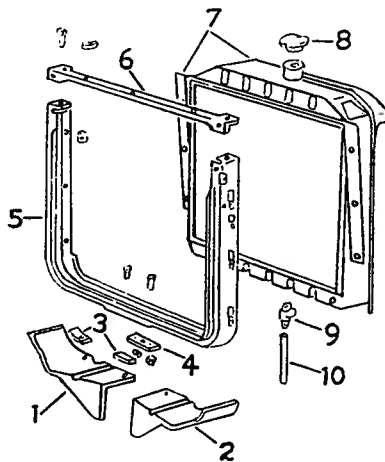


Fig. 5

## Radiator

All Models

See Fig. 5

1-2 RAD. SUPT. SHIELD 8L-16554—1949 to 1951 (right*) .....	1.47
3 SUPT. SHIELD ANTISQUEAK 8M-6780—1949 to 1951 .....	.03

\* Opposite side one part number higher

4 FRONT FENDER APRON & RAD. SUPT. PAD 8M-16186—1949 to 1951 .....	.05
5 FENDER APRON & RAD. SUPT. 0L-16138—1949-50 .....	8.35
0L-16138—1951 .....	8.35
6 FENDER APRON & RAD. BAR 0L-16152—1949-50, early .....	1.33
0L-16152—1950, late; 1951....	1.33
7 RADIATOR ASSY. 8EH-8005-A—1949-50, early ..	95.60
0EH-8005—1949 to 1951.....	95.60
8 RADIATOR CAP 26H-8100-B—1949-50, early ..	1.71
0L-8100-A—1950, late; 1951..	.67
9 RAD. DRAIN COCK 9N-8115—1949 to 1951 straight type .....	.24
8CM-8115-A—1949 to 1951, tee type .....	.50
10 DRAIN COCK EXTEN. HOSE 8M-8081—1949 to 1951 .....	.05

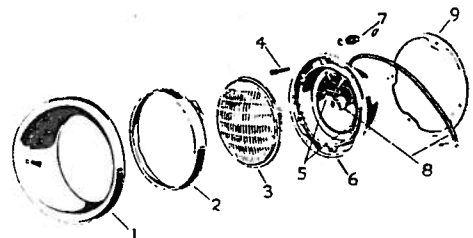


Fig. 6

## Headlamp

All Models

See Fig. 6

1 HEADLAMP DOOR OR RIM 8H-13045—1949-50 (right*) ..	5.12
1L-13045—1951 (right*) .....	5.12
2 BULB RETAINING RING 0A-13018-C—1949 to 1951....	1.33
3 SEALED BEAM UNIT OR BULB 09A-13007—1949 to 1951.....	1.43
4 LAMP ADJ. SCREW 8A-13032—1949 to 1951.....	.06
5 LAMP BULB RING SPRING 11A-13031—1949 to 1951 .....	.05
6 HEADLAMP ASSY. 8L-13002—1949 .....	7.54
0L-13002—1950 .....	6.12
1L-13002-A—1951 .....	6.12
7 SERVICED IN KIT ONLY, 51A-13076-B	
8 HEADLAMP WIRING ASSY. 51A-13076-B—1949, 20" long..	1.28
0A-13076—1950, 13½" long...	1.10
1L-13076—1951, 16½" long...	1.28
9 LAMP TO FENDER GASKET 11A-13044-A—1949 to 1951....	.30

# BODY PARTS 1949 thru 1951 COSMOPOLITAN LINCOLN

Series 9H, 0H and 1H. ALL BODY STYLES

## Parking Lamp

All Models

Not Illustrated

<b>PARKING LAMP ASSY.</b>	
7EH-13200—1949 (right*) ...	4.75
0L-13200—1950 (right*) .....	5.20
1L-13200—1951 (right*) .....	5.20
<b>LAMP LENS</b>	
7EH-13208—1949 (right*) .....	.81
0L-13208—1950 (right*) .....	.50
1L-13208—1951 .....	.50
<b>LAMP LENS GASKET</b>	
7EH-13211—1949, 3 holes ....	.17
0L-13211—1950 .....	.12
1L-13211—1951 .....	.12
<b>LAMP BULB</b>	
11A-13465—1949 to 1951, offset base .....	.36
<b>LAMP WIRING &amp; SOCKET ASSY.</b>	
7EH-13234—1949 .....	1.52
0M-13234—1950-51 .....	.98

## Sheet Metal & Fuel Tank

Body Type—72—Coupes

See Fig. 7

<b>1 ROOF PANEL ASSY.</b>	
0H-7250200—1949-50 .....	149.00
0H-7250200-B—1951 .....	149.00
<b>2 ROOF DRIP MLDG.</b>	
7EH-7251700—1949 to 1951 (right*) .....	2.19
<b>3 ROOF SIDE RAIL REINFMT.</b>	
8H-7251196-A—1949-50, w/o depressions (right*)....	4.41
8H-7251196-B—1949-50, w/o depressions (right*)....	4.41
1H-7251196—1951 (right*) ...	4.41
<b>4 ROOF SIDE RAIL</b>	
8H-7251184—1949-50, w/o depressions (right*)...	9.15
1H-7251184—1951 (right*)....	9.64
<b>5 REAR HALF ROOF SIDE RAIL</b>	
7EH-7251214—1949, w/o depressions (right*)....	5.79
8H-7251214-C—1949-50, w/o depressions (right*)...	7.79
1H-7251214—1951 (right*)....	8.21
<b>6 DASH PANEL ASSY.</b>	
8H-7301610—1949 .....	26.01
0H-7301610—1950-51 .....	43.02
<b>7 DASH TO FRAME BRACE</b>	
8H-7301780—1949-50 (right*) .	2.69
0H-7301780—1951 (right*) ...	4.40

<b>8 COWL SIDE PILLAR &amp; PANEL</b>	
8H-7302042-B—1949 (right*) .	27.38
0H-7302042-B—1950 (right*)..	22.00
0H-7302042-C—1951 (right*)..	22.00
<b>9 FRONT HINGE PILLAR</b>	
8H-7302658—1949 (right*) ...	15.43
0H-7302658-B—1951 (right*)..	13.41
<b>10 UPPER DOOR HINGE</b>	
7EH-7322800—1949 to 1951 (right*) .....	4.86
<b>11 LOWER DOOR HINGE</b>	
7EH-7322810—1949 to 1951... ..	4.09
<b>12 DOOR ASSY. (PRIME, LESS TRIM &amp; HDW.)</b>	
8H-7220122-B—1949 (right*)..	97.40
0H-7220122-A—1950 (right*)..	97.40
1H-7220122—1951 (right*) ...	97.40
<b>13 QUARTER LOCK PILLAR ASSY.</b>	
8H-7228160-B—1949 (right*) .	13.35
0H-7228160—1950-51 (right*) .	13.35
<b>14 QUARTER PANEL ASSY.</b>	
7EH-7227840—1949 (right*)..	120.00
0H-7227840—1950 (right*) ...	120.00
1H-7227840—1951 (right*) ...	120.00
<b>15 FUEL TANK FILLER LID</b>	
7EH-7228611—1949-50 .....	1.10
1H-7228611—1951 .....	1.59
<b>16 UPPER BACK PANEL</b>	
8H-7240314—1949 to 1951.....	5.87

<b>17 LUGGAGE COMPT. DOOR (LESS LOCK)</b>	
8H-7240112—1949 .....	51.02
0H-7240112—1950 .....	49.10
1H-7240112—1951 .....	49.05
<b>18 LOWER BACK PANEL</b>	
8H-7240320—1949-50 .....	6.57
1H-7240320—1951 .....	6.80
<b>19 REAR FLOOR PAN EXTENSION</b>	
7EH-7311250—1949 to 1951... ..	1.26
<b>20 REAR FLOOR PAN ASSY.</b>	
8H-7211216-B—1949 .....	53.91
0H-7211216—1950 .....	53.91
1H-7211216—1951 .....	40.50
<b>21 FRONT FLOOR PAN ASSY.</b>	
8H-7311134-B—1949, adj. foot rest type.....	84.30
8H-7311134-D—1949 .....	72.62
0H-7311134—1950-51 .....	74.75
<b>22 TRANS. FLOOR COVER PLATE</b>	
8H-7312108-A—1949 .....	9.40
8H-7312108-C—1950-51 .....	19.85
<b>23 FLOOR SIDE MEMBER</b>	
8H-7210110—1949 (right*)....	4.76
0H-7310110—1950 (right*)....	5.16
0H-7310110—1951 (right*)....	5.16
<b>24 ROCKER PANEL ASSY.</b>	
8H-7210130—1949 (right*) ...	10.97
0H-7210130—1950-51 (right*) .	10.97
<b>FUEL TANK ASSY.</b>	
8H-9002—1949 to 1951, 34" long .....	21.95

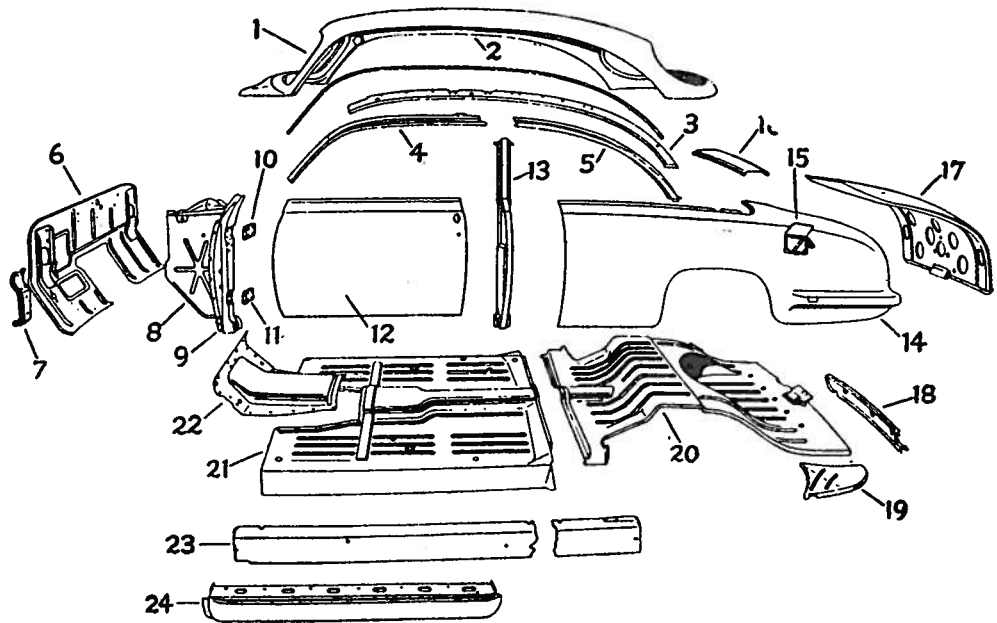


Fig. 7—Sheet Metal & Fuel Tank—Body Type 72—Coupe

\* Opposite side one part number higher

# LINCOLN COSMOPOLITAN 1949 thru 1951 BODY PARTS

Series 9H, 0H and 1H. ALL BODY STYLES

## Body Sheet Metal & Fuel Tank

Body Type—73, 74, 4 Door Sedans  
See Fig. 8

<b>FUEL TANK ASSY.</b>	
8H-9002—1949 to 1951 .....	21.95
<b>1 ROOF PANEL ASSY.</b>	
8H-7350200—1949, 73 .....	217.60
0H-7250200—1949-50, 74 .....	149.00
0H-7250200-B—1951, 74 .....	149.00
<b>2 ROOF DRIP MLDG.</b>	
7EH-7351700—1949, 73 (right*) .....	2.24
7EH-7251700—1949 to 1951, 74 (right*) .....	2.19
<b>3 ROOF SIDE RAIL REINFMT.</b>	
8H-7351196-A—1949, 73 w/o depressions (right*) .....	4.31
8H-7351196-B—1949, 73 w depressions (right*) .....	4.31
8H-7451196-A—1949, 74 w/o depression (right*) .....	6.07
8H-7451196-B—1949-50, 74 w depression (right*) .....	6.07
1H-7451196—1951 (right) ....	5.67
<b>4 ROOF SIDE RAIL</b>	
7EH-7351184—1949, 73, 74 w/o depressions (right*) .....	6.79
8H-7351184—1949-50, w de- pressions (right*) .....	6.79
1H-7451184—1951 (right*) ...	6.78
<b>5 REAR HALF SIDE RAIL</b>	
8H-7351214-C—1949, 73 w/o depressions (right*) .....	9.02

8H-7351214-C—1949, 73 w depressions (right*) .....	9.02
7EH-7451214—1949, 74 w/o de- pressions (right*) .....	8.28
8H-7451214-C—1949-50, 74 w depressions (right*) .....	8.84
1H-7451214—1951, 74 (right*)	7.48
<b>6 DASH PANEL ASSY.</b>	
8H-7301610—1949 .....	26.01
0H-7301610—1950-51 .....	43.02
<b>7 DASH TO FRAME BRACE</b>	
8H-7301780—1949-50 (right*) .	2.69
0H-7301780—1951 (right*) ...	4.40
<b>8 COWL SIDE PILLAR &amp; PANEL</b>	
8H-7302042-B—1949 (right*) .	27.38
0H-7302042-A—1950 (right*) .	22.15
0H-7302042-C—1950 (right*) .	60.85
<b>9 FRONT HINGE PILLAR ASSY.</b>	
8H-7302658, 1949, w/brkt. (right*) .....	15.43
0H-7302658-B—1951 (right*) .	13.41
<b>10 UPPER HINGE ASSY. (FRONT)</b>	
7EH-7322800—1949 to 1951 (right*) .....	4.86
<b>11 LOWER DOOR HINGE ASSY. (FRONT)</b>	
7EH-7322810—1949 to 1951 (right*) .....	4.09
<b>12 FRONT DOOR ASSY. (PRIME, LESS TRIM &amp; HDW.)</b>	
8H-7320122-B—1949 (right*) .	88.75
0H-7320122-A—1950 (right*) .	88.75
1H-7420122—1951 (right*) ...	88.80

<b>13 CENTER PILLAR ASSY.</b>	
8H-7324300-B—1949 (right*) .	18.15
0H-7324300—1950-51 .....	18.43
<b>14 REAR DOOR ASSY. (PRIME, LESS TRIM &amp; HDW.)</b>	
8H-7324622-B—1949 (right*) .	71.50
0H-7324622-A—1950 (right*) .	71.50
1H-7424622—1951 (right*) ...	71.55
<b>15 REAR DOOR UP. HINGE</b>	
7EH-7326800—1949 to 1951 (right*) .....	4.66
<b>16 REAR DOOR LOWER HINGE</b>	
7EH-7326810—1949 to 1951 (right*) .....	4.86
<b>17 QUARTER HINGE PILLAR</b>	
8H-7328104—1949, 73 (right*)	15.26
8H-7428104—1949, 74 (right*)	14.97
7EH-7428104—1950-51 (right*) .....	14.97
<b>18 QUARTER PANEL</b>	
7EH-7327840—1949, 73 (right*) .....	69.52
7EH-7427840—1949, 74 (right*) .....	136.24
0H-7427840—1950, 74 (right*)	136.24
1H-7427840—1951, 74 (right*)	136.89
<b>19 FUEL TANK FILLER LID</b>	
7EH-7328611—1949, 73 .....	.98
7EH-7228611—1949 exc. 73; 1950 .....	1.10
1H-7228611—1951 .....	1.59
<b>20 UPPER BACK PANEL</b>	
8H-7240314—1949 to 1951, 74 .	5.87
<b>21 LUGGAGE COMPT. DOOR LESS LOCK</b>	
8H-7340112—1949, 73 .....	49.62
8H-7240112—1949, 74 .....	51.02
0H-7240112—1950 .....	49.10
1H-7240112—1951 .....	49.05
<b>22 LOWER BACK PANEL</b>	
8H-7340320—1949, 73 .....	4.83
8H-7240320—1949-50, 74 .....	6.57
1H-7240320—1951 .....	6.80
<b>23 REAR FLOOR PAN EXTEN. (right*) .....</b>	
7EH-7311250—1949 to 1951 (right*) .....	1.26
<b>24 REAR FLOOR PAN ASSY.</b>	
8H-7311216-E—1949, 73, reinfmt. 1/2" hole .....	52.62
8H-7311216-B—1949, 73, 74, reinfmt. 3/8" hole .....	53.55
0H-7211216—1950 .....	53.91
1H-7211216—1951 .....	40.50
<b>25 FRONT FLOOR PAN &amp; REINFMT.</b>	
8H-7311134-A—1949, 73, metal foot rest .....	65.62
8H-7311134-B—1949, 73, 74, adj. foot rest.....	84.30
8H-7311134-D—1949, 73, 74...	72.62
0H-7311134—1950-51 .....	74.75
<b>26 FRONT FLOOR TRANS. COVER PLATE</b>	
8H-7312108-A—1949 .....	9.40
8H-7312108-C—1950-51 .....	19.85

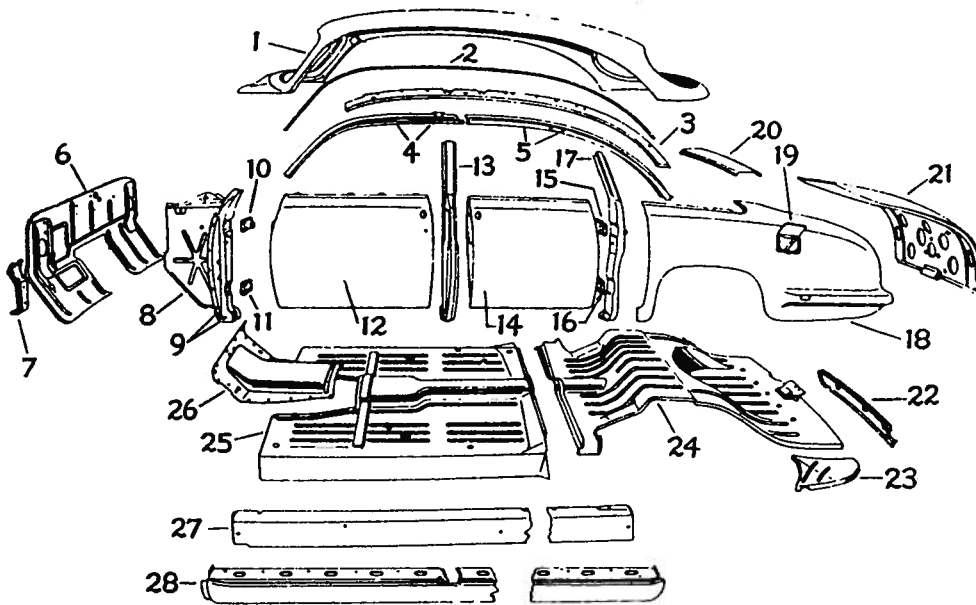


Fig. 8—Body Sheet Metal & Fuel Tank—4-Door

\* Opposite side one part number higher

# BODY PARTS 1949 thru 1951 COSMOPOLITAN LINCOLN

## Series 9H, 0H and 1H. ALL BODY STYLES

- 7 FLOOR SIDE MEMBER ASSY.
  - 7EH-7310110—1949, w/o de-  
pressions (right\*) ..... 5.61
  - 8H-7310110 — 1949, w/depres-  
sions (right\*) ..... 5.61
  - 0H-7310110—1950 (right\*) ... 5.16
  - 0H-7310110—1951 (right\*).... 5.16
- 3 ROCKER PANEL ASSY.
  - 0H-7310130—1949 (right\*) ... 12.94
  - 0H-7310130—1950-51 (right\*).. 12.94

### Sheet Metal & Fuel Tank

Body Type—76—Convertible Coupes  
See Fig. 9

- FUEL TANK ASSY.
  - 8H-9002—1949 to 1951 ..... 21.95
- FRONT BODY ASSY.
  - 8H-7600120-A—1949, w/o  
silencer ..... 227.99
  - 8H-7600120-B—1949, w/silencer 227.99
  - 0H-7600120-A—1950 ..... 161.75
  - 0H-7600120-D—1951 ..... 161.75

- COWL SIDE PILLAR & PANEL
  - 8H-7602042—1949 ..... 49.97
  - 0H-7602042-A—1950 ..... 39.49
  - 0H-7602042-C—1951 ..... 165.00

- DOOR ASSY. (Prime, less trim & hdw.)
  - 8H-7620122-B—1949 (right\*) . 97.50
  - 0H-7620122-A—1950 (right\*) . 97.50
  - 1H-7620122—1951 (right\*) ... 97.40

- QUARTER LOCK PILLAR
  - 8H-7628160—1949 (right\*) ... 19.59
  - 0H-7628160—1950-51 (right\*).. 20.93

- REAR QUARTER & BACK BODY  
PANEL
  - 8H-7627800—1949 ..... 155.17
  - 0H-7627700—1950 ..... 246.72
  - 1H-7627700—1951 ..... 248.11

- REAR QUARTER PANEL
  - 8H-7627840—1949 (right\*) ... 94.33

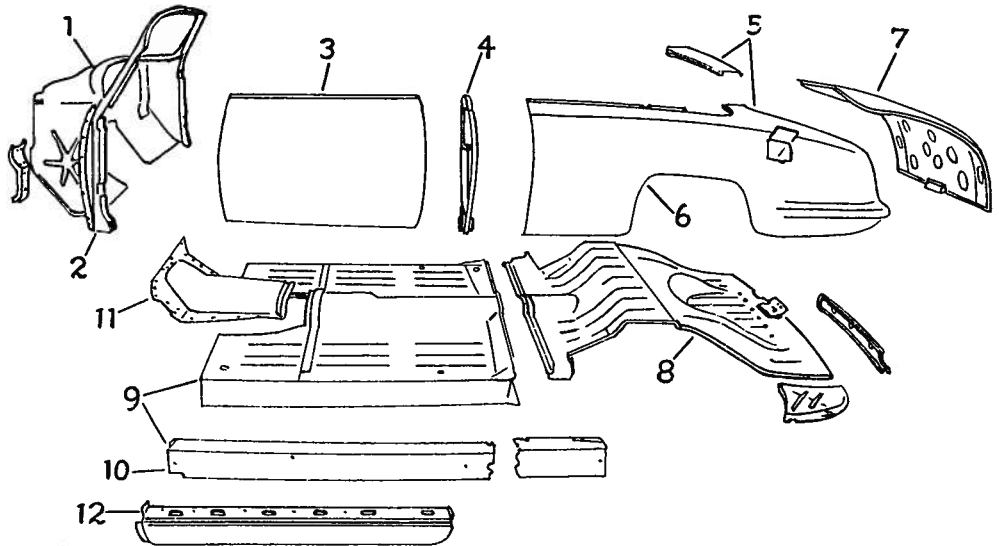


Fig. 9—Sheet Metal & Fuel Tank (Convertible)

- 0H-7627840—1950 (right\*) ... 124.81
- 1H-7627840—1951 (right\*).... 183.67
- 7 LUGGAGE COMPT. DOOR (Less lock)
  - 8H-7240112—1949 ..... 51.02
  - 0H-7240112—1950 ..... 49.10
  - 1H-7240112—1951 ..... 49.05
- 8 REAR FLOOR PAN ASSY.
  - 8H-7611216-B—1949, reinfmt.  
3/8" hole ..... 61.60
  - 8H-7611216-E—1949, reinfmt.  
1/2" hole ..... 61.60
  - 8M-7211216-C—1950 ..... 34.03
  - 1M-7211216—1951 ..... 68.72
- 9 FRONT FLOOR PAN
  - 8H-7611100-C—1949, w/o case  
nuts ..... 122.30
  - 0H-7611135—1950-51 ..... 56.34

- 10 FLOOR SIDE MEMBER
  - 8H-7610110—1949-50 ..... 4.88
  - 0H-7610110—1951 ..... 4.88
- 11 FRONT FLOOR TRANS. COVER  
PLATE
  - 8H-7312108-A—1949 ..... 9.40
  - 8H-7312108-C—1950-51 ..... 19.85
- 12 ROCKER PANEL
  - 0H-17610130—1949 to 1951 ... 14.28

### Rear Bumper

All Models  
See Fig. 10

- 1-2 BUMPER IMPACT BAR
  - 7EH-17864—1949 (right\*).... 43.00
  - 0H-17864—1950 (right\*)..... 43.00
  - 1H-17864—1951 (right\*) ..... 47.00
- 3 BUMPER CENTER IMPACT BAR
  - 7EH-17866—1949-50, lower.... 10.86
  - 1L-17866—1951 ..... 9.65
- 4 UPPER CENTER IMPACT BAR
  - 7EH-17867—1949-50 ..... 13.96
- 5-6 BUMPER GUARD
  - 8H-17984—1949-50 (right\*) .. 9.20
  - 1L-17984—1951 ..... 27.60
- 7-8 INNER BUMPER HANGER
  - 7EH-17786-B—1949-50 (right\*) 2.31
  - 1H-17787—1951 ..... 9.79
- 9-10 OUTER BUMPER HANGER
  - 7EH-17795-B—1949-50 (right\*) 1.83
  - 1H-17795—1951 (right\*) ..... 2.71
- 11 BUMPER TO FRAME BRACE
  - 7EH-17789—1949 to 1951 ..... 1.10
- 12 BUMPER CENTER BAR REINFMT.
  - 7EH-17858—1949-50 ..... 2.57

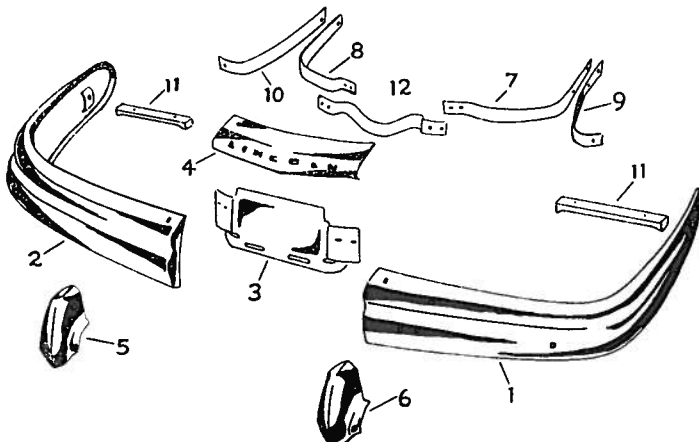


Fig. 10—Rear Bumper—All Models

\* Opposite side one part number higher

# LINCOLN COSMOPOLITAN 1949 thru 1951 BODY PARTS

Series 9H, 0H and 1H. ALL BODY STYLES

## Front Door

Body Types, 72, 73, 74

See Fig. 11

<b>1 DOOR WDW. GLASS</b>	
7EH-7221410—1949 to 1951, 72	10.52
7EH-7321410—1949 to 1951, 73, 74	7.25
<b>2 DOOR LOCK REMOTE CONTROL</b>	
7EH-7221830—1949, 72 (right*)	2.60
7EH-7321830—1949, 73, 74 (right*)	2.03
0H-7321830—1950, 74 (right*)	2.03
1H-7321818—1951, 74 (right*)	.90
<b>3 UPPER DOOR HINGE</b>	
7EH-7322800—1949 to 1951 (right*)	4.86
<b>4 LOWER DOOR HINGE</b>	
7EH-7322810—1949 to 1951 (right*)	4.09
<b>5 DOOR WDW. FRAME ASSY.</b>	
8H-7222218-B—1949, 72 (right*)	73.69
8H-7322220—1949, 73, 74 (right*)	47.38
0H-7222218—1950, 72 (right*)	71.55
0H-7322220—1950, 74 (right*)	45.09
0H-7222218—1951, 72 (right*)	71.55
0H-7322218—1951, 74 (right*)	67.93
<b>6 DOOR WDW. HYD. REGLTR.</b>	
8H-7323200-A—1949 to 1951..	20.14
<b>7 DOOR VENT. FRAME &amp; GLASS ASSY.</b>	
8H-7321228—1949 (right*)	13.17
8H-7321228-B—1950-51 (right*)	15.05
<b>8 DOOR VENT. GLASS</b>	
8H-7321412—1949	2.50
8H-7321412-B—1950-51	4.05
<b>9 DOOR LOCK SAFETY CATCH ROD</b>	
7EH-7321852—1949 (right*)	.22
0H-7321852—1950-51 (right*)	.05
<b>10 DOOR ASSY. (Prime, less trim &amp; hdw.)</b>	
8H-7220122-B—1949, 72 (right*)	97.40
8H-7320122-B—1949, 73, 74 (right*)	88.75
0H-7320122-A—1950, 74 (right*)	88.75
0H-7220122-A—1950, 72 (right*)	97.40
1H-7220122—1951, 72 (right*)	97.40
1H-7420122—1951, 74 (right*)	88.80
<b>11 HYD. REGLTR. SWITCH</b>	
8H-7223302-A—1949, single sw.	2.85
8H-7223303-A—1949, four sw..	9.50
0H-7223302—1950, single sw...	2.85
0H-7223303—1950, four sw...	9.50
1H-7223302—1951, single sw...	4.75
1H-7223303—1951, four sw...	7.60
<b>12 REGLTR. SW. MTG. PLATE</b>	
8H-7224232—1949-50, single sw.	.35
8H-7224233—1949-50, multiple sw.	.42

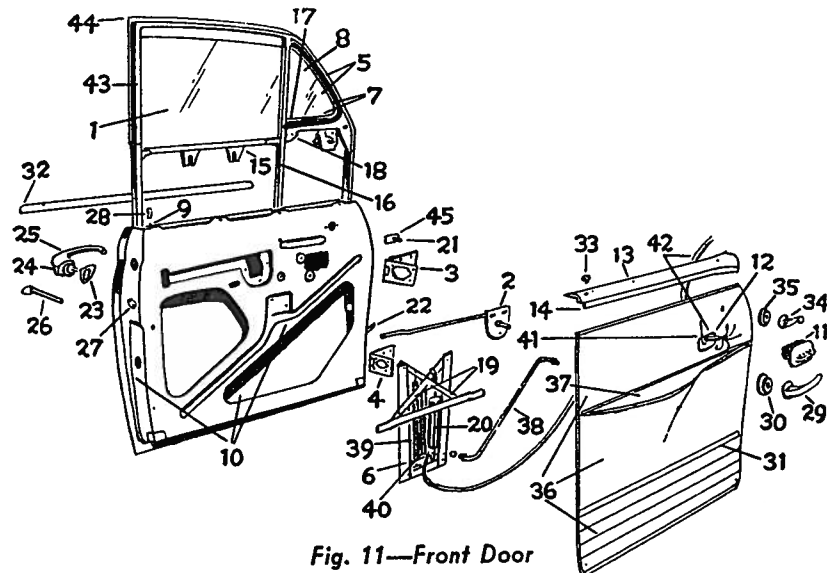


Fig. 11—Front Door

1H-7224232-A—1951, single sw.	.55
1H-7224233-A—1951, multiple sw.	.55
<b>13 COMPLETE DOOR WDW. FINISH STRIP</b>	
8H-7220900-BAC—1949, 72, blue (right*)	9.57
8H-7320900-CAC—1949, 73, 74, blue (right*)	10.33
0H-7220900-AA—1950, 72, mahogany (right*)	15.88
0H-7320900-AA—1950, 74, mahogany (right*)	13.91
1H-7220900-AP—1951, 72, prime (right*)	16.74
1H-7420900-AP—1951, 74, prime (right*)	12.64
Note: Other color strips available.	
<b>14 DOOR WDW. FINISH MLDG.</b>	
8H-7220954-A—1949, 72, steel (right*)	3.60
8H-7220954-B—1949, 72, chrome (right*)	3.60
8H-7320954—1949, 73, 74, steel (right*)	3.17
8H-7320954-B—1949, 73, 74, chrome (right*)	3.17
<b>15 DOOR GLASS CHAN. &amp; BRKT. ASSY.</b>	
8H-7221462—1949 to 1951, 72, hyd.	2.16
8H-7321462—1949 to 1951, 73, 74, hyd.	1.54
<b>16 DOOR DIV. BAR, BRKT. &amp; WTHSTP.</b>	
8H-7322296—1949 to 1951 (right*)	7.03
<b>17 DOOR VENT. LATCH</b>	
8H-7322858—1949	1.59
8L-7222924—1950-51 (right*)	.40
<b>18 DOOR VENT. LATCH BRKT.</b>	
8H-7323058—1949	.22

Note: 1950-51, serviced in assy. only. 8L-7022204 (right*).	
<b>19 HYD. WDW. REGLTR. FRAME ASSY.</b>	
8H-7323204—1949 to 1951.....	6.57
<b>20 HYD. WDW. REGLTR. CYL. ASSY.</b>	
8H-7323244—1949 to 1951.....	9.36
<b>21 DOOR VENT. REGLTR. SHAFT EXTEN.</b>	
8H-7323456—1949	.43
0H-7323456—1950	.35
1H-7223456—1951	.26
<b>22 DOOR CHECK ARM ASSY.</b>	
7EH-7323500—1949 to 1951...	.45
<b>23 OUTER DOOR HANDLE PAD</b>	
7EH-7322448—1949, small	.07
7EH-7322428—1949, large	.17
0L-7222448—1950-51, small	.04
0L-7222448—1950, large	.05
0L-7222448-B—1951, large	.05
<b>24 OUTER DOOR HANDLE BUTTON</b>	
7EH-7322450—1949	2.16
0A-7022454—1950	.28
0M-7222454—1951	.29
<b>25 OUTER DOOR HANDLE</b>	
7EH-7322404—1949	3.91
0H-7322400—1950-51	2.64
<b>26 DOOR LOCK &amp; SLEEVE ASSY.</b>	
8H-7321984—1949 (right*)	2.21
0H-7321984-A—1950 (right*)	2.16
0H-7221984—1951 (right*)	1.66
<b>27 DOOR LOCK ASSY.</b>	
8H-7321812—1949 (right*)	4.83
0A-7021812—1950-51 (right*)	3.36
<b>28 DOOR LOCK CONTROL ROD KNOB</b>	
8H-7321850-B—1949, dark gray	.22
8H-7321850-C—1949, chrome	.35
0H-7321850—1950-51	.35

\* Opposite side one part number higher

# BODY PARTS 1949 thru 1951 COSMOPOLITAN LINCOLN

## Series 9H, 0H and 1H. ALL BODY STYLES

<b>9 INNER DOOR HANDLE</b>		
8H-7322600—1949 .....	2.21	
8H-7322614-B—1950 .....	1.43	
1L-7222600—1951 .....	1.66	
<b>0 INNER DOOR HANDLE OR REGLTR. ESCUTCHEON</b>		
8H-7322618—1949 .....	1.26	
8H-7322618-B—1950 .....	.62	
<b>1 DOOR LOWER TRIM MLDG.</b>		
7EH-7220956—1949, 72, flat back .....	3.09	
7EH-7320956—1949, 73, 74, flat back .....	2.84	
8H-7220956—1949, 72, curved back .....	3.86	
8H-7320956—1949, 73, 74, curved back .....	3.21	
0H-7220942-A—1950, 72 (right*) .....	4.48	
0H-7320942-A—1950, 74 (right*) .....	3.91	
1L-7220942—1951, 72, chrome (right*) .....	4.36	
1L-7420942—1951, 74, chrome (right*) .....	1.10	
<b>2 DOOR BELT MLDG.</b>		
7EH-7220934—1949, 72 (right*) .....	8.79	
8H-7321018—1949, 73, 74 (right*) .....	9.12	
8H-7220934—1950 (right*) .....	12.24	
8H-7320934—1950 (right*) .....	9.12	
8M-7020934—1951, 72 (right*) .....	2.03	
8M-7320934—1951, 74 (right*) .....	1.45	
<b>3 DOOR LOCK FERRULE</b>		
16H-7321999-A—1949, brass..	.15	
8H-7221999—1949, rubber .....	.05	
8M-7221999—1950-51, rubber..	.05	
<b>4 DOOR VENT. REGLTR. HANDLE</b>		
8H-7323410—1949-50 .....	1.54	
1L-7223410—1951 .....	1.67	
<b>5 DOOR VENT. REGLTR. HANDLE ESCUTCHEON</b>		
8H-7323420—1949 .....	.90	
0H-7323420—1950 .....	.57	
1L-7223420—1951 .....	.83	
<b>6 DOOR PANEL TRIM ASSY.</b>		
8H-7223868-M—1949, 72, up. tan (right*) .....	103.36	
8H-7323868-F—1949, 73, 74, up. olue (right*) .....	52.71	
0H-7223942-AC—1950, 72, up. dark gray (right*) .....	30.21	
0H-7423942-AC—1950, 74 up. dark gray (right*) .....	52.71	
1H-7223942-AB—1951, 72, tan (right*) .....	34.31	
1H-7423942-AC—1951, 74, light gray (right*) .....	30.41	
Note: Other color trims are available.		
<b>7 DOOR ARM REST</b>		
8H-7224140-A—1949, 72, top gray (right*) .....	32.26	

8H-7324140-A—1949, 73, 74, top gray (right*) .....	25.33
0H-7324140-AC—1950, 72, 74, top dark gray (right*) .....	27.96
0H-7624140-AH—1951, 72, 74, top tan (right*) .....	29.00
Note: Other color rests are available.	
<b>38 WINDOW REGLTR. TUBE ASSY.</b>	
7EH-7253350—1949 to 1951, 72 (right*) .....	1.09
7EH-7353350—1949 to 1951, 73, 74 (right*) .....	.88
<b>39 HYD. WDW. OPERATING SPRING</b>	
8H-7353329—1949-50, outer ...	.95
1H-7253330—1951 .....	1.09
<b>40 INNER HYD. WDW. OPERATING SPRING</b>	
8H-7353330—1949-50 .....	.88
<b>41 WDW. REGLTR. SW. TO SOLENOID WIRING</b>	
8H-14508—1949-50 early .....	.67
0H-14508—1950 late; 1951....	.19
<b>42 SEE ITEM #12</b>	
<b>43 DOORGLASS RUN</b>	
7EH-7321550—1949 to 1951 ...	1.04
<b>44 UPPER DOOR GLASS RUN</b>	
7EH-7221548—1949 to 1951, 72	1.02
7EH-7321548—1949 to 1951, 73, 74 .....	.81
<b>45 DOOR VENT. REGLTR. SHAFT RETAINER</b>	
16H-7323468—1949-50 .....	.35
1L-7223468—1951 .....	.45

<b>Rear Door</b>	
<i>Body Types—73, 74—Sedans</i>	
<i>See Fig. 12</i>	
<b>1 DOOR GLASS ASSY.</b>	
7EH-7325712—1949, 73 .....	11.16
7EH-7425712—1949 to 1951...	11.09
<b>2 DOOR GLASS FRAME ASSY.</b>	
8H-7326220-B—1949, 73 (right*) .....	34.33
8H-7426220-B—1949, 74 (right*) .....	34.33
0H-7426220—1950 (right*) ...	32.64
0H-7426220-B—1951 (right*)..	31.81
<b>3 DOOR BELT MLDG.</b>	
8H-7325554—1949-50 (right*)..	11.45
8M-7425554—1951 (right*)...	1.28
<b>4 LOWER DOOR HINGE</b>	
7EH-7326810—1949 to 1951, 73, 74 (right*) .....	4.86
<b>5 UPPER DOOR HINGE</b>	
7EH-7326800—1949 to 1951 (right*) .....	4.66
<b>6 DOOR LOCK REMOTE CONTROL</b>	
7EH-7326406—1949 .....	2.21
0H-7326404—1950 .....	.86
1H-7426404—1951 .....	.86
<b>7 DOOR LOCK SAFETY CATCH ROD</b>	
7EH-7321852—1949 .....	.22
0H-7321852—1950-51 (right*)..	.05
<b>8 WINDOW REGLTR. ASSY.</b>	
8H-7323200-A—1949 to 1951..	20.14

*continued*

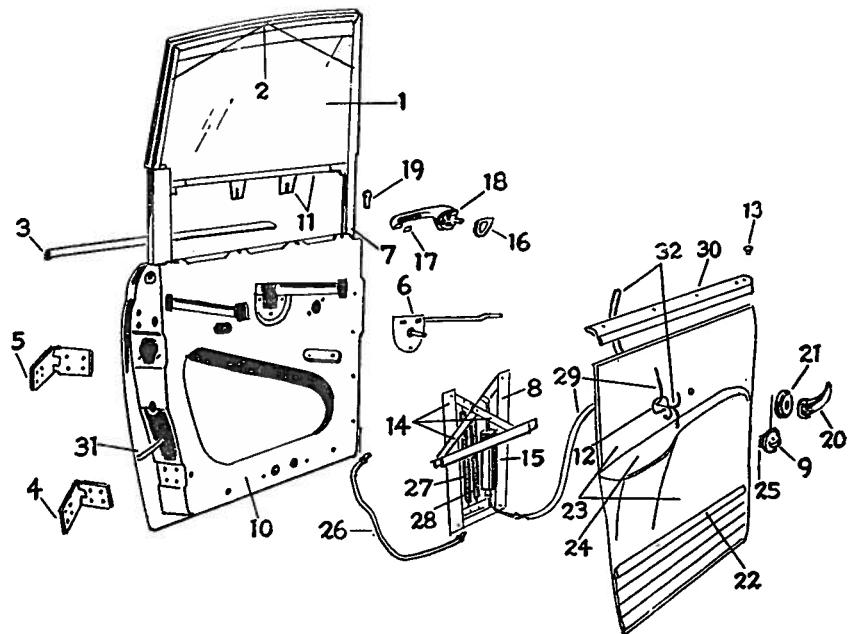


Fig. 12—Rear Door

\* Opposite side one part number higher



# INCOLN COSMOPOLITAN 1949 thru 1951 BODY PARTS

Series 9H, 0H and 1H. ALL BODY STYLES

## Rear Door—continued

<b>HYD. REGLTR. SW. &amp; HOUSING</b>	
8H-7223302-A—1949, single sw.	2.85
8H-7223303-A—1949, four sw.	9.50
0H-7223302—1850, single sw.	2.85
0H-7223303—1950, four sw.	9.50
1H-7223302-A—1951	4.75
1H-7223303-A—1951	7.60
<b>DOOR ASSY. (Prime, less trim &amp; hdw.)</b>	
8H-7324622-B—1949, 73, 74 (right*)	71.50
0H-7324622-A—1950 (right*)	71.50
1H-7324622—1951 (right*)	71.55
<b>DOOR GLASS CHAN. &amp; BRKT. (right*)</b>	
8H-7326228-B—1949 to 1951	1.93
<b>REGLTR. SW. MTG. PLATE</b>	
8H-7224232—1949-50, single	.35
8H-7224233—1949-50, multiple	.42
1H-7224232-A—1951, single	.55
1H-7224233-A—1951, multiple	.55
<b>DOOR LOCK KNOB FERRULE</b>	
16H-7321999-A—1949, brass	.15
8H-7221999—1949-50, rubber	.05
8M-7221999—1951, rubber	.05
<b>HYD. REGLTR. FRAME ASSY.</b>	
8H-7323204—1949 to 1951	6.57
<b>HYD. REGLTR. CYL. ASSY.</b>	
8H-7323244—1949 to 1951	9.36
<b>OUTER DOOR HANDLE PAD (Large)</b>	
7EH-7322428—1949	.17
0L-7222428—1950	.05
0L-7222428-B—1951	.07
<b>OUTER DOOR HANDLE PAD (Small)</b>	
7EH-7322448—1949	.07
0L-7222448—1950-51	.05
<b>OUTER DOOR HANDLE</b>	
7EH-7322404—1949 (right*)	3.91
0H-7322400—1950 (right*)	2.64
0H-7222400—1951 (right*)	3.78
<b>DOOR LOCKING ROD KNOB</b>	
8H-7321850-B—1949, gray metallic	.22
8H-7321850-C—1949, chrome	.35
0H-7321850—1950-51	.35
<b>INNER DOOR HANDLE</b>	
8H-7322600—1949	2.21
8H-7322614-B—1950	1.43
1L-7222600—1951	1.66
<b>INNER DOOR OR REGLTR. HANDLE ESCUTCHEON</b>	
8H-7322618—1949	1.26
8H-7322618-B—1950	.62
<b>DOOR LOWER TRIM PANEL MLDG.</b>	
7EH-7325558—1949, flat back	2.29
8H-7325558—1949, curved back	2.64
0L-7425558-A—1950, 24 1/32" long	1.26
0H-7325558-A—1950, 27 29/64" long	1.38

1L-7425558—1951, 24 3/32" long	1.55
1H-7425558—1951, 28 7/8" long	1.36
<b>23 DOOR TRIM ASSY.</b>	
8H-7327406-F—1949, up. gray (right*)	46.07
0H-7327434-AC—1950, dark gray (right*)	22.69
1H-7427434-AC—1951, light gray (right*)	22.24
Note: Other color trims are available.	
<b>24 DOOR ARM REST ASSY.</b>	
8H-7327540-A—1949, top blue gray (right*)	28.34
0H-7327540-AC—1950, top dark gray (right*)	15.86
1H-7427540-AC—1951, top dark gray (right*)	16.43
<b>25 HYD. REGLTR. SW. &amp; HOUSING</b>	
8H-7223302-A—1949, single sw.	2.85
8H-7223303-A—1949, four sw.	9.50
0H-7223302—1950, single sw.	2.85
0H-7223303—1950, four sw.	9.50
1H-7223302-A—1951, single sw.	4.75
1H-7223303-A—1951, four sw.	7.60
<b>26 HYD. REGLTR. TUBE ASSY. (right*)</b>	
7EH-7353368—1949 to 1951	.90
<b>27 OUTER HYD. OPERATING SPRING</b>	
8H-7353329—1949-50, green	.95
1H-7253330—1951	1.09
<b>28 INNER HYD. OPERATING SPRING</b>	
8H-7353330—1949-50, yellow	.88
<b>29 REGLTR. SW. TO SOLENOID WIRING</b>	
8H-14508—1949-50 early	.67
0H-14508—1950 late; 1951	.19
<b>30 WINDOW FINISH STRIP ASSY. (right*)</b>	
8H-7325500—1949, blue	6.91

0H-7325500-AA—1950, mahogany (right*)	9.79
1H-7425500-AP—1951, prime (right*)	11.74

Note: Other color strips are available.

<b>31 DOOR CHECK ARM ASSY.</b>	
7EH-7323500—1949 to 1951	.45
<b>32 WINDOW SW. TO BODY HARNESS</b>	
8H-14339-C—1949	9.93
0H-14339-B—1950	5.36
1H-14339-A—1951	5.85

## Convertible Door

Body Type—76—Convertible

See Fig. 13

<b>1 LOCK SIDE CHAN. &amp; BRKT.</b>	
8H-7621702—1949 (right*)	7.14
0H-7621702—1950-51 (right*)	5.57
<b>2 DOOR WDW. GLASS</b>	
8H-7621410—1949 to 1951	9.88
<b>3 DOOR GLASS CHAN. &amp; FRAME</b>	
8H-7621400—1949-50 (right*)	74.03
0H-7621400—1951 (right*)	78.02
<b>4 COMPLETE VENT. WDW. (right*)</b>	
8H-7621402—1949 (right*)	106.65
8H-7621402-B—1950-51 (right*)	109.77
<b>5 DOOR VENT. GLASS</b>	
8H-7621412—1949 to 1951	2.97
<b>6 VENT. WDW. FRAME &amp; GLASS (right*)</b>	
8H-7621228—1949 to 1951	19.10
<b>7 DOOR BELT MLDG.</b>	
8H-7620934—1949 (right*)	8.86
8H-7620934-B—1950 (right*)	8.86
0H-7621010—1951 (right*)	11.98
<b>8 OUTER DOOR HANDLE (right*)</b>	
7EH-7322404—1949 (right*)	3.91

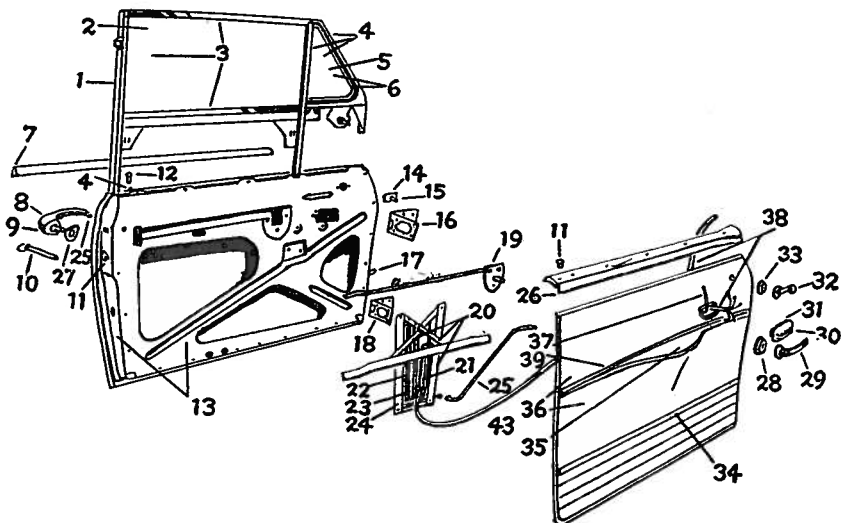


Fig. 13—Convertible Door

\* Opposite side one part number higher

# BODY PARTS 1949 thru 1951 COSMOPOLITAN LINCOLN

## Series 9H, 0H and 1H. ALL BODY STYLES

0H-7322400—1950 (right*) ...	2.64
0H-7222400—1951 (right*) ...	3.78
<b>OUTER HANDLE PUSH BUTTON</b>	
7EH-7322450—1949 .....	2.16
0A-7022454—1950 .....	.30
0M-7222454—1951 .....	.29
<b>0 DOOR LOCK CYL. &amp; SLEEVE &amp; KEY</b>	
8H-7321984—1949 (right*) ...	2.21
0H-7321984-A—1950 (right*) .	2.16
0H-7221984—1951 (right*) ...	1.66
<b>1 DOOR LOCK ASSY.</b>	
8H-7321812—1949 (right*) ...	4.83
0A-7021812—1950-51 (right*) .	3.36
<b>2 DOOR LOCKING ROD KNOB</b>	
8H-7321850-B—1949, gray	
metallic .....	.22
8H-7321850-C—1949, chrome ..	.35
0H-7321850—1950-51 .....	.35
<b>3 DOOR ASSY. (PRIME, LESS TRIM &amp; HDW.)</b>	
8H-7620122-B—1949 (right*) .	97.50
0H-7620122-A—1950 (right*) .	97.50
1H-7620122—1951 (right*) ...	97.40
<b>4 VENT. REGLTR. SHAFT RETAINER</b>	
16H-7323468—1949-50 .....	.35
1L-7223468—1951 .....	.45
<b>5 VENT. REGLTR. EXTEN. SHAFT</b>	
8H-7623456—1949 .....	1.10
0H-7623456—1950 .....	1.10
1H-7623456—1951 .....	1.70
<b>6 UPPER DOOR HINGE</b>	
7EH-7322800—1949 to 1951	
(right*) .....	4.86
<b>7 DOOR CHECK ARM ASSY.</b>	
7EH-7323500—1949 to 1951 ...	.45
<b>8 LOWER DOOR HINGE</b>	
7EH-7322810—1949 to 1951 ..	4.09
<b>9 DOOR LOCK REMOTE CONTROL</b>	
7EH-7221830—1949 (right*) ..	2.60
0H-7221818—1950 (right*) ...	.97
1H-7221818—1951 (right*) ...	1.09
<b>10 HYD. REGLTR. FRAME ASSY.</b>	
8H-7323204—1949 to 1951 ....	6.57
<b>11 HYD. REGLTR. CYL. ASSY.</b>	
8H-7323244—1949 to 1951 ....	9.36
<b>12 OUTER HYD. OPERATING SPRING</b>	
8H-7353329—1949-50, green ..	.95
<b>13 INNER HYD. OPERATING SPRING</b>	
8H-7353330—1949-50 .....	.95
1H-7253330—1951 .....	1.09
<b>14 WINDOW REGLTR. ASSY.</b>	
8M-7623200—1949 (right*) ...	19.57
8H-7323200-A—1950-51	
(right*) .....	20.14
<b>15 WINDOW REGLTR. TUBE ASSY.</b>	
7EH-7253350—1949 to 1951	
(right*) .....	1.09
<b>16 WINDOW FINISH MLDG.</b>	
8H-7220954-B—1949 (right*) .	3.60
0H-7110954—1950-51 .....	2.95

<b>27 OUTER DOOR HANDLE PAD.</b>	
7EH-7322428—1949, large ....	.17
7EH-7322448—1949, small ....	.07
0L-7222428—1950, large ....	.07
0L-7222448—1950-51, small ...	.05
0L-7222428-B—1951 .....	.05
<b>28 INNER DOOR OR REGLTR. HANDLE ESCUTCHEON</b>	
8H-7322618—1949 .....	1.26
8H-7322618-B—1950 .....	.62
<b>29 INNER DOOR HANDLE</b>	
8H-7322600—1949 .....	2.21
8H-7322614-B—1950 .....	1.43
1L-7222600—1951 .....	1.66
<b>30 REGLTR. SW. &amp; HOUSING ASSY.</b>	
8H-7223302-A—1949, single sw.	2.85
8H-7223303-A—1949, four sw..	9.50
0H-7223302—1950-51, single	
sw. ....	2.85
0H-7223303—1950-51, four sw.	9.50
<b>31 SEE ITEM NO. 30</b>	
<b>32 VENT. REGLTR. HANDLE</b>	
8H-7323410—1949-50 .....	1.54
1L-7223410—1951 .....	1.67
<b>33 VENT. REGLTR. HANDLE ESCUTCHEON</b>	
8H-7323420—1949 .....	.90
0H-7323420—1950 .....	.57
1L-7223420—1951 .....	.83
<b>34 DOOR TRIM LOWER MLDG.</b>	
7EH-7220956—1949, flat back .	3.09
8H-7220956—1949, curved back	3.86
0H-7620942-A—1950 (right*) .	2.98
1H-7620942—1951 .....	3.31

<b>35 DOOR ARM REST</b>	
8H-7624140-D—1949, blue	
(right*) .....	29.00
0H-7324140-AC—1950, top dark	
gray (right*) .....	27.96
0H-7624140-AH—1951, top tan	
(right*) .....	30.26
Note: Other color rests available	
<b>36 DOOR TRIM PANEL ASSY.</b>	
8H-7623868-H—1949, up. blue	
(right*) .....	72.53
0H-7623942-AX—1950, up.	
black (right*) .....	41.22
1H-7623942-AX—1951, up.	
black (right*) .....	41.12
Note: Other color trim panels are available	
<b>37 REGLTR. SW. TO SOLENOID</b>	
8H-14508—1949-50, early ....	.67
0-14508—1950, late; 1951.....	.19
<b>38 WDW. SW. TO HARNESS WIRING ASSY.</b>	
8H-14338-D—1949 to 1951 ....	5.02
<b>39 DOOR ARM REST MLDG.</b>	
8L-7624190-A—1949, steel	
(right*) .....	4.69
8H-7624190-B—1949, chrome	
(right*) .....	5.88
0L-7224190-A—1950-51	
(right*) .....	1.41

### Quarter Window

Body Type—76—Convertible

See Fig. 14

<b>1 FRONT SIDE RAIL WDW. SEAL RETAINER</b>	
8H-7651126—1949 to 1951 .....	1.71
<b>2 VENT. WDW. WTHSTP.</b>	
8H-7621448—1949 to 1951	
(right*) .....	7.03
<b>3 CENTER SIDE RAIL WDW. SEAL RETAINER</b>	
8H-7651150—1949 to 1951	
(right*) .....	1.31
<b>4 CENTER WTHSTP. ROOF SIDE RAIL</b>	
8H-7651564—1949 to 1951 .....	2.21
<b>5 REAR WTHSTP. SIDE ROOF RAIL</b>	
8H-7651566—1949 to 1951	
(right*) .....	2.64
<b>6 WDW. QTR. PILLAR SEAL RETAINER</b>	
8H-7628278—1949 to 1951	
(right*) .....	1.31
<b>7 QTR. WDW. GLASS UP. WTHSTP.</b>	
8H-7630618-A—1949 to 1951 ..	2.00
<b>8 QTR. VENT. WDW. WTHSTP.</b>	
8H-7629904—1949 .....	3.88
0H-7629904-B—1950-51 .....	3.88

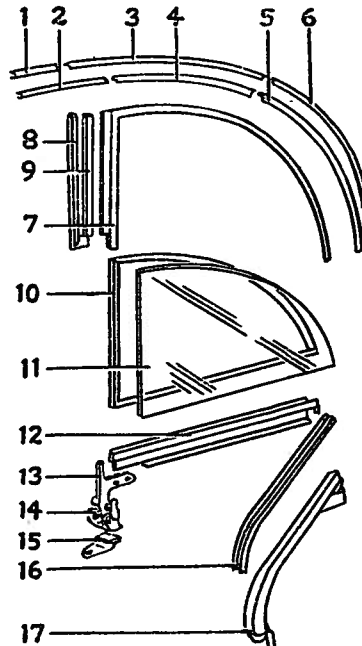


Fig. 14

\* Opposite side one part number higher

continued

# LINCOLN COSMOPOLITAN 1949 thru 1951 BODY PARTS

Series 9H, 0H and 1H. ALL BODY STYLES

## Quarter Window— continued

9 QTR. WDW. WTHSTP. FRONT RETAINER 8H-7629906—1949 to 1951.....	1.09
10 QTR. WDW. GLASS BOTTOM WTHSTP. 8H-7629070-A—1949 to 1951...	1.14
11 QTR. WDW. GLASS ASSY. 8H-7629710—1949; 1951 .....	8.00
0H-7629710—1950 .....	8.00
12 QTR. GLASS CHAN. & BRKT. ASSY. 8H-7629900—1949 to 1951.....	8.84
13 QTR. WDW. FRAME HINGE 8H-7629954—1949 to 1951 (right*) .....	4.28
14 QTR. WDW. BODY HINGE 8H-7629948—1949 to 1951.....	4.09
15 QTR. WDW. BODY BRKT. 8H-7629932—1949 .....	2.57
0H-7629932—1950-51 .....	3.26
16 QTR. WDW. GUIDE WTHSTP. 7A-7629750-A—1949 to 1951 (right*) .....	.69
17 COMPLETE QTR. WDW. GUIDE ASSY. 8H-7629764—1949 to 1951 (right*) .....	5.50

## Moldings, Wheels & Glass

Body Type—73, 74, 4 Door Sedan

See Fig. 15

1 HOOD CENTER ORNAMENT 8H-16850—1949-50 .....	14.80
1L-16850—1951 .....	11.55
2 FRONT FENDER MLDG. 8H-16196—1949-50 (right*)...	23.02
1H-16003—1951 (right*) .....	5.60
3 WHEEL ASSY. 0L-1015-AP—1949 to 1951....	11.80
4 WHEEL HUB CAP 0L-1129—1949-50 .....	6.25
1LA-1130—1951 .....	5.00
HUB CAP MEDALLION 8L-1141—1949-50, gold plated.	1.47
0L-1141—1950, chrome .....	1.00
5 FRONT FENDER SIDE MEDALLION 8H-16724-C—1949 "Cosmopolitan" .....	1.28
0H-16724—1950-51 "Cosmopolitan" .....	1.78
6 FRONT DOOR BELT MLDG. 8H-7321018—1949 (right*)....	9.12
8H-7320934—1949-51 (right*)..	9.12
7 OUTER DOOR HANDLE 7EH-7322404—1949, push button type (right*)...	3.91
0H-7322400—1950 (right*)....	2.64
0H-7222400—1951 (right*)....	3.78

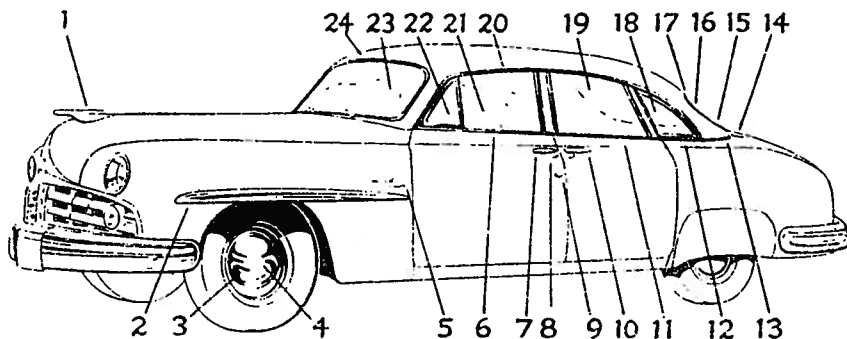


Fig. 15—Moldings, Wheels & Glass—4 Door

8 OUTER DOOR HANDLE BUTTON 7EH-7322450—1949 .....	2.16
0A-7022454—1950 .....	.28
0M-7222454—1951 .....	.29
9 DOOR LOCK & SLEEVE ASSY. (W/KEYS) 8H-7321984—1949 (right*)....	2.21
0H-7321984-A—1950 (right*)..	2.16
0H-7321984—1951 (right*)....	2.16
10 SEE ITEM NO. 7	
11 REAR DOOR BELT MLDG. 8H-7325554—1949-50 (right*)..	11.45
8M-7425554-B—1951 (right*)..	1.28
12 QUARTER PANEL BELT MLDG. 7EH-7429034—1949, 74 (right*) .....	4.84
8H-7429034—1950-51 (right*)..	5.81
13 ROOF PANEL FINISH MLDG. 8H-7251734-B—1949 to 1951....	2.86
14 LUGGAGE COMPT. DOOR HINGE 7EH-7342700—1949, 73, w/spring .....	4.72
7EH-7242700—1949 to 1951, 74 (right*) .....	4.83
15 BACK WINDOW END GLASS 7EH-7342026—1949, 73 (right*) .....	6.16
7EH-7242026—1949 to 1951 (right*) .....	6.02
16 BACK WDW. DIV. BAR MLDG. 7EH-7342292-A—1949, steel...	1.38
7EH-7342292-B—1949 to 1951, chrome .....	1.38
17 BACK WDW. CENTER GLASS 7EH-7342006—1949 to 1951....	21.32
18 QUARTER WDW. GLASS 8H-7329710—1949, 73 .....	6.81
8H-7429710—1949 to 1951, 74..	5.18
19 REAR DOOR GLASS 7EH-7325712—1949, 73 .....	11.16
7EH-7425712—1949 to 1951....	11.09
20 ROOF DRIP MLDG. 7EH-7351700—1949, 73 (right*) .....	2.24

7EH-7251700—1949 to 1951, 74 (right*) .....	2.19
21 FRONT DOOR GLASS 7EH-7321410—1949 to 1951..	7.25
22 FRONT DOOR VENT. GLASS 8H-7321412-A—1949 .....	2.50
8H-7321412-B—1950-51 .....	4.05
23 WINDSHIELD GLASS 7EH-7303100—1949 to 1951 ...	50.24
24 OUTER WDSHD. FINISH MLDG. 7EH-7303088-A—1949, steel...	9.43
7EH-7303088-B—1949, chrome.	9.43
0H-7303088—1950, chrome (right*) .....	4.28
0H-7203088—1951, chrome (right*) .....	4.28

## Moldings, Wheels & Glass

Body Type—72, H72C, CAPRI 2 Door  
and Coupes

See Fig. 16

1 HOOD TOP ORNAMENT 8H-16850—1949-50, center ....	14.80
1L-16850—1951 .....	11.55
2 HEDLAMP RIM 8H-13045—1949-50 .....	5.12
1L-13045—1951 .....	5.12
3 WHEEL ASSY. 0L-1015-AP—1949 to 1951....	11.80
4 HUB CAP MEDALLION 8L-1141—1949-50, early .....	1.47
0L-1141—1950, late .....	1.00
5 HUB CAP 0L-1129—1949-50, shell .....	6.25
1L-1130-A—1951 .....	5.00
6 FENDER SIDE MLDG. 8H-16196—1949-50 (right*)...	23.02
1H-16003—1951 (right*) .....	5.60
7 FENDER SIDE MEDALLION 8H-16724-C—1949 .....	1.28
0H-16724—1950-51 .....	2.15

\* Opposite side one part number higher

# BODY PARTS 1949 thru 1951 COSMOPOLITAN LINCOLN

## Series 9H, 0H and 1H. ALL BODY STYLES

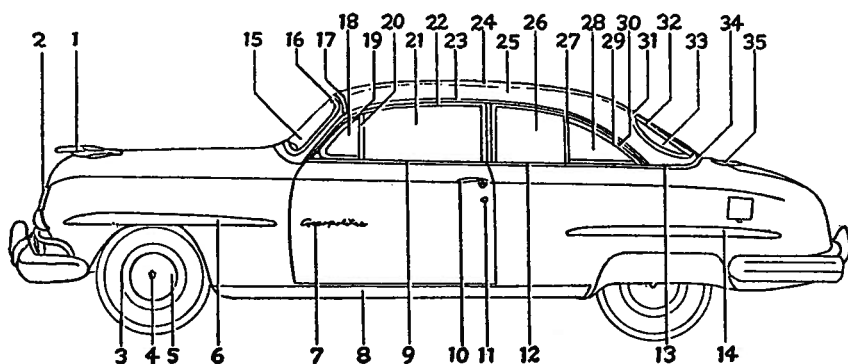


Fig. 16—Moldings, Wheels &amp; Glass—2 Door

<b>8 ROCKER PANEL BUFFER MLDG.</b> 0H-7310176—1950-51 (right*)	14.65
<b>9 DOOR BELT MLDG.</b> 7EH-7220934—1949 (right*)... 8H-7220934—1950 (right*).... 8H-7221010—1951 (right*)....	8.79 12.24 4.86
<b>10 OUTER DOOR HANDLE</b> 8L-7333400-A—1949, pull type. 0H-7322400—1950 (right*).... 0H-7222400—1951 (right*)....	3.17 2.64 3.78
<b>11 DOOR CYL. &amp; SLEEVE (WITH KEY)</b> 8H-7321984—1949 (right*).... 0H-7321984-A—1950 (right*).... 0H-7221984—1951 (right*)....	2.21 2.16 1.66
<b>12 QUARTER BELT MLDG. &amp; WTHSTP.</b> 8H-7229022—1949 (right*).... 8H-7229034—1950-51 (right*)....	12.38 8.34
<b>13 ROOF PANEL FINISH MLDG. (REAR)</b> 8H-7251734-B—1949 to 1951 (right*)	2.86
<b>14 FRONT FENDER CENTER MLDG.</b> 8H-16196—1949-50 (right*)... 1H-16003—1951 (right*)	23.02 5.60
<b>15 WINDSHIELD GLASS</b> 7EH-7303100—1949 to 1951...	50.24
<b>16 OUTER WDSHD. MLDG.</b> 7EH-7303088-A—1949, steel (right*) 7EH-7303088-B—1949, chrome (right*) 0H-7303088—1950 (right*).... 0H-7203088—1951 (right*)....	9.43 9.43 9.43 4.28
<b>17 ROOF PANEL FINISH MLDG.</b> 8H-7251734-B—1949 to 1951 (right*)	2.86
<b>18 DOOR VENT GLASS</b> 8H-7321412-A—1949 to 1951 ..	2.50
<b>19 VENT. FRAME &amp; GLASS ASSY.</b> 8H-7321228-B—1949 to 1951 (right*)	15.05
<b>20 VENT. DIV. BAR, BRKT. WTHSTP.</b> 8H-7322296—1949 to 1951 (right*)	7.03

<b>21 DOOR WINDOW GLASS</b> 7EH-7221410—1949 to 1951...	10.52
<b>22 ROOF DRIP MLDG.</b> 7EH-7251700—1949 to 1951 (right*)	2.19
<b>23 SEE ITEM NO. 17</b>	
<b>24 TOP MATERIAL NOT LISTED</b>	
<b>25 TOP INSULATION NOT LISTED</b>	
<b>26 QUARTER WINDOW GLASS</b> 7EH-7229710—1949 to 1951...	6.59
<b>27 QUARTER WDW. VENT. DIV. BAR</b> 7EH-7230234—1949 to 1951 (right*)	4.36
<b>28 QUARTER VENT. GLASS</b> 8H-7229712—1949 to 1951....	6.26
<b>29 QUARTER WDW. FRAME &amp; GLASS ASSY.</b> 8H-7229700—1949 to 1951 (right*)	18.33
<b>30 QUARTER WDW FINISH &amp; WTHSTP.</b> 8H-7229000-BAC—1949, blue metallic (right*).... 0H-7229000-AA—1950, mahogany (right*)	10.79 11.97

1L-7229002—1951, prime (right*)	27.50
<b>31 BACK WDW. INNER &amp; OUT. DIV. BAR</b> 7EH-7342292-A—1949, steel... 7EH-7342292-B—1949 to 1951, chrome	1.38 1.38
<b>32 BACK WDW. CENTER GLASS</b> 7EH-7342006—1949 to 1951...	21.32
<b>33 BACK WDW. END GLASS</b> 7EH-7242026—1949 (right*)..	6.02
<b>34 SEE ITEM NO. 17</b>	
<b>35 LUGGAGE COMPT. DOOR HINGE</b> 7EH-7242700—1949 to 1951 (right*)	4.83

### Hydraulic System

Body Type—76—Convertible

See Fig. 17

<b>1 OPERATING CYL. YOKE</b> 8H-7650774—1949 to 1951	6.10
<b>2 OPERATING CYL.</b> 8H-7650599—1949 to 1951	14.74
<b>3 REGLTR. SW. &amp; HOUSING ASSY.</b> 8H-7223302-A—1949, single sw. 8H-7223303-A—1949, four sw.. 0H-7223302—1950-51, single sw. 0H-7223303—1950-51, four sw.	9.50 9.50 2.85 9.50
<b>4 QTR. WDW. REGLTR.</b> 8H-7630306—1949 to 1951 (right*)	19.00
<b>5 QTR. WDW. HYD. CYL.</b> 8H-7623602—1949 to 1951	11.72
<b>6 QTR. WDW. OPERATING SPRING</b> 8H-7623603—1949 to 1951	2.12
<b>7 DOOR WDW. REGLTR.</b> 8M-7623200—1949 (right*) ... 8H-7323200-A—1950 8M-7023200-B—1951 (right*)..	19.57 20.14 20.14

continued

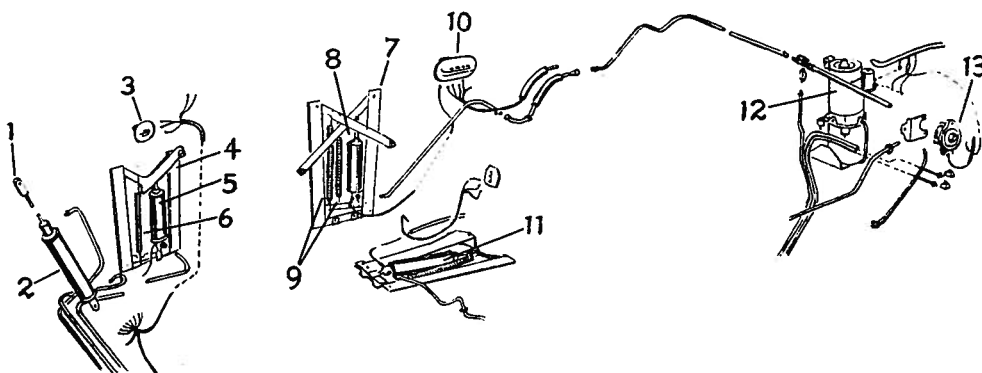


Fig. 17—Hydraulic System

\* Opposite side one part number higher

# LINCOLN COSMOPOLITAN 1949 thru 1951 BODY PARTS

Series 9H, 0H and 1H. ALL BODY STYLES

## Hydraulic System— continued

8 DOOR WDW. CYL. 8H-7323244—1949 to 1951.....	9.36
9 WDW. OPERATING SPRING 8H-7353330—1949-50, in. yellow 8H-7353329—1949-50, out. green .....	.88 .95
1H-7253330—1951 .....	1.09
10 SEE ITEM #3	
11 NOT SERVICED	
12 HYD. PUMP & MOTOR ASSY. 8H-7353334—1949 .....	71.19
0H-7353334—1949-50 .....	71.19
13 OPERATING CONTROL VALVE 5EH-7650738—1949 to 1951...	7.84

## Top Lifting Parts

Body Type—76—Convertible  
See Fig. 18

1 No. 1 BOW HEADER ASSY. 8H-7651270—1949 to 1951 .....	78.31
2 LOCK HANDLE SHAFT BUSHING 8H-7653121—1949 to 1951.....	.45
3 TOP LOCKING HANDLE 8H-7603570—1949 to 1951.....	2.61
4 No. 2 BOW & LINKS ASSY. 8H-7651264—1949 to 1951.....	28.17
5 No. 3 BOW TAPPING PLATE 8H-7651256—1949 to 1951.....	.50
6 No. 3 BOW ASSY. 8H-7651272—1949 to 1951.....	3.71
7 TOP BALANCE LINK 8H-7650454-A—1949, bar type. 8H-7650454-B—1949, tubular type .....	9.64 7.14
8 UPPER POWER LINK 8H-7650370—1949; 1951 .....	4.07
0H-7650370—1950 .....	4.07
9 LOWER POWER LINK 8H-7650418—1949 to 1951 (right*) .....	4.07
10 REAR BOW ASSY. 8H-7651278-A—1949 .....	27.79
0H-7651278—1950-51 .....	28.41
11 REAR BOW SLAT IRON 8H-7650340—1949 .....	9.88
0H-7650340—1950-51 .....	6.66
12 OPERATING CYL. YOKE 8H-7650774—1949 to 1951.....	6.10
13 TOP MTG. BRKT. 8H-7653118—1949 to 1951 (right*) .....	16.90

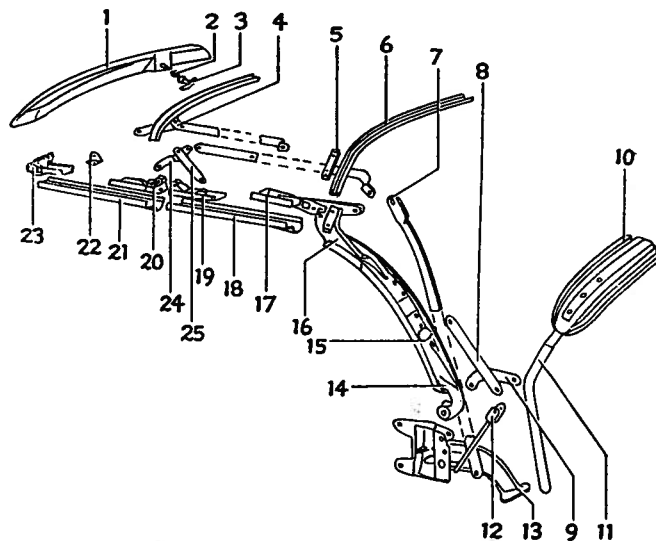


Fig. 18—Top Lifting Parts

14 TOP PILLAR HINGE 8H-7624324—1949 to 1951 (right*) .....	11.15
15 TOP PILLAR RAIL ASSY. 8H-7653196—1949 to 1951 (right*) .....	33.46
16 UPPER QTR. PILLAR BRKT. 8H-7650378—1949 to 1951 (right*) .....	15.60
17 REAR SIDE RAIL REAR HINGE 8H-7653170—1949 to 1951 (right*) .....	7.38
18 COMPLETE REAR SIDE RAIL ASSY. 8H-7651154—1949 to 1951 (right*) .....	28.93
19 REAR SIDE RAIL FRONT HINGE 8H-7653010—1949 to 1951 (right*) .....	9.98
20 FRONT SIDE RAIL HINGE & LINK ASSY. 8H-7653008—1949 to 1951 (right*) .....	10.95
21 FRONT SIDE RAIL ASSY. 8H-7653006—1949 to 1951 (right*) .....	25.50
22 No. 2 BOW CON. LINK TO FRONT SIDE RAIL BRKT. 8H-7650890—1949 to 1951 (right*) .....	.90
23 SLAT IRON SIDE RAIL TO HEADER BRKT. 8H-7650832—1949 to 1951 (right*) .....	7.88
24 SIDE RAIL FRONT CONTROL LINK 8H-7650310—1949 to 1951.....	4.66

25 TOP No. 1 LINK 8H-7650432—1949 to 1951 (right*) .....	9.98
--	------

## Rear Lamp

All Models

Not Illustrated

REAR LAMP ASSY. 7E8H-13404-A—1949-50 .....	7.47
1H-13404—1951 (right*) .....	10.95
LAMP DOOR OR RIM 7E8H-13448—1949-50 (right*)	2.60
1H-13448—1951 (right*) .....	6.20
LAMP GASKET 7E8H-13444—1949-50 .....	.08
LAMP INNER DOOR 7E8H-13443—1949-50 .....	1.54
LAMP LENS 7E8H-13450-A—1949 .....	.97
1L-13440—1951 .....	6.75
LAMP GASKET 7E8H-13461—1949 .....	.17
LAMP BULB 11A-13465—1949 to 1951, offset base .....	.36
LAMP SOCKET & WIRING 7E8H-13410—1949-50 .....	.90
8M-13410-A—1951 .....	.98
LAMP MTG. PAD 7E8H-13420—1949-50 .....	.28
1H-13420-B—1951 .....	.31

\* Opposite side one part number higher

# BODY PARTS 1949 thru 1951 COSMOPOLITAN LINCOLN

## Series 9H, 0H and 1H. ALL BODY STYLES

### Front Suspension Parts

See Fig. 19

<b>SUPER SHAFT INNER KIT</b> 8M-3047—1949 to 1951.....	3.00
<b>UPPER ARM &amp; INNER SHAFT</b> 8M-3044—1949 to 1951.....	8.60
<b>UPPER ARM TO SPINDLE SUPT. KIT</b> 8M-3049—1949 to 1951.....	2.30
<b>SPINDLE SUPT.</b> 8M-3052—1949 to 1951 (right*)	10.35
<b>SPINDLE BOLT &amp; BUSH. KIT</b> 8M-3111—1949 to 1951.....	4.30
<b>SPINDLE BOLT THRUST BEARING</b> HB-3123-A—1949 to 1951 .....	.83
<b>SERVICED IN KIT ONLY ITEM #5</b>	
<b>SPINDLE ASSY. (Includes nut)</b> 8M-3105—1949 to 1951.....	14.20
<b>LOWER ARM TO SPINDLE SUPT. BOLT KIT</b> 8M-3050—1949 to 1951.....	1.90
<b>LOWER ARM &amp; INNER SHAFT ASSY.</b> 8M-3042—1949 to 1951.....	10.95
<b>LOWER INNER SHAFT KIT</b> 8M-3048—1949 to 1951 .....	5.09
<b>SERVICED IN KIT ONLY ITEM #11</b>	
<b>FRONT SPRING</b>	
8L-5310-A—1949 to 1951, red paint .....	11.10
8L-5310-B—1949 to 1951, blue, H. D. ....	11.85
Note: Other numbered springs available.	
<b>SPRING UPPER INSULATOR</b> 8M-5415-A—1949 to 1951 .....	.32
<b>SPRING LOWER INSULATOR</b> 8M-5414-A—1949 to 1951 .....	.50
<b>LOWER ARM BUMPER</b> 8M-3020-B—1949 to 1951 .....	.50

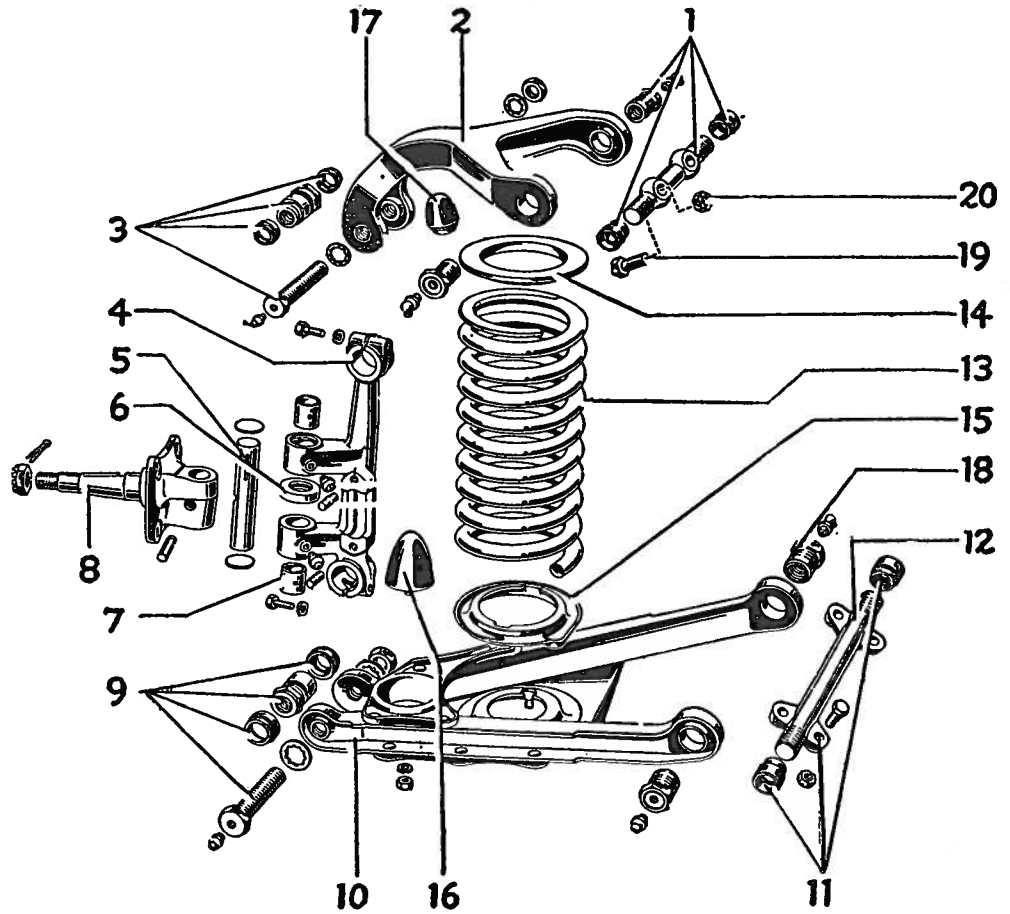


Fig. 19—Front Suspension

<b>17 UPPER REBOUND BUMPER</b> 8L-3025—1949 to 1951 .....	.30	<b>19 UPPER ARM TO FRAME BOLT</b> 350790-S7—1949 to 1951 .....	.18
<b>18 SERVICED IN KIT ONLY, ITEM #11</b>		<b>20 UPPER ARM TO FRAME BOLT NUT</b> 34451-S—1949 to 1951 .....	.12

### STEERING GEOMETRY

1949 to 1951

**CASTER:** 1949-50 1/2 degree positive to 1/2 degree negative. 1951 0 to 1 1/2 degrees negative.

*Outer Wheel 20 degrees. Inner Wheel 23 1/4 degrees.*

**CAMBER:** 0 to 3/4 degree positive.

**KING PIN INCLINATION:** 5 degrees.

**TOE-IN:** 1949-50 0 to 5/32 inch. 1951 3/32 to 5/32 inch.

#### ADJUSTMENTS

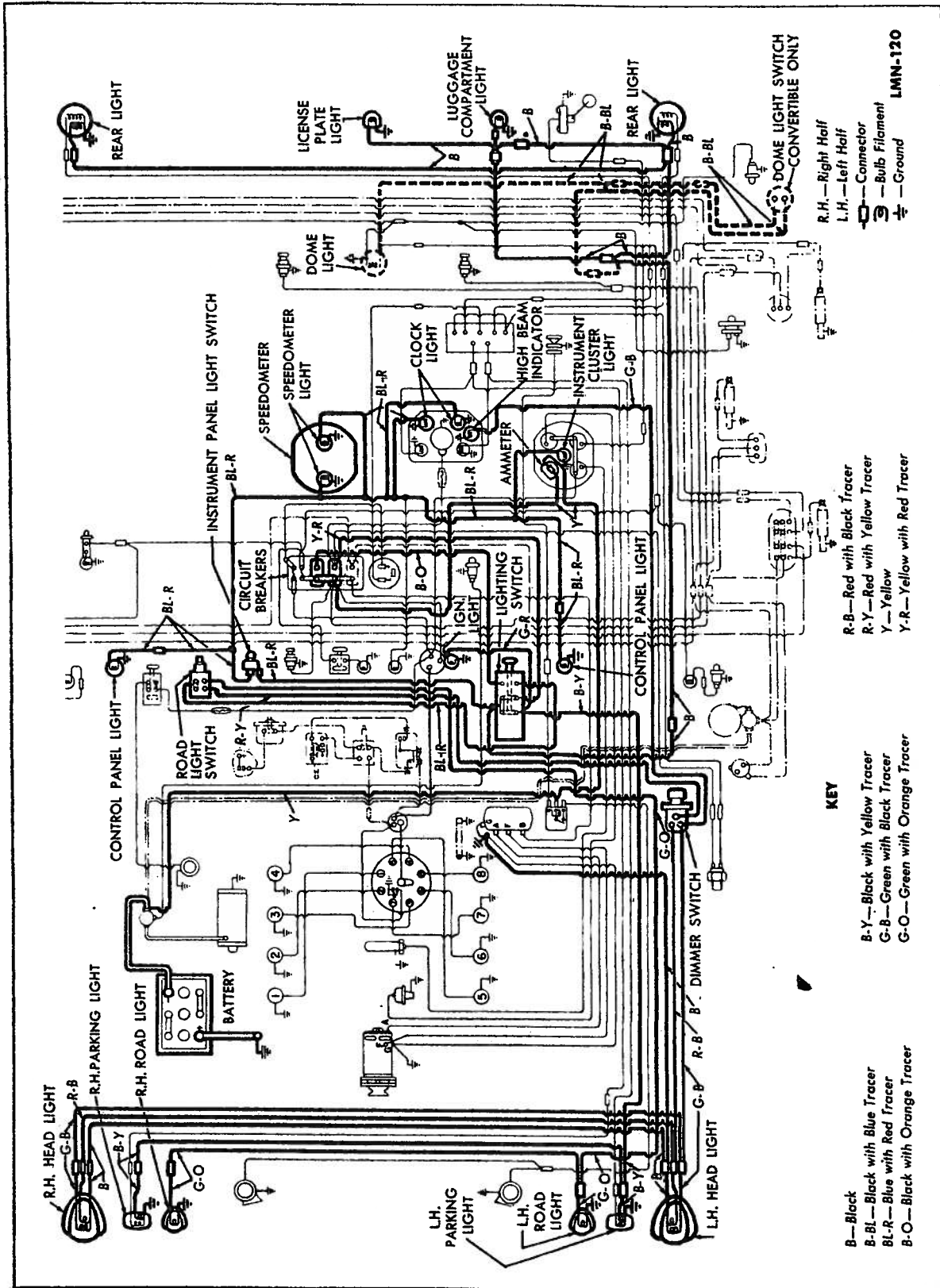
**CASTER:** is adjusted by turning sleeve in the lower suspension arm. Turn towards the rear of the car to decrease caster, towards front to increase caster.

**TOE-OUT TURNS (TURNING RADIUS):**

\* Opposite side one part number higher

**LINCOLN 1949 WIRING**

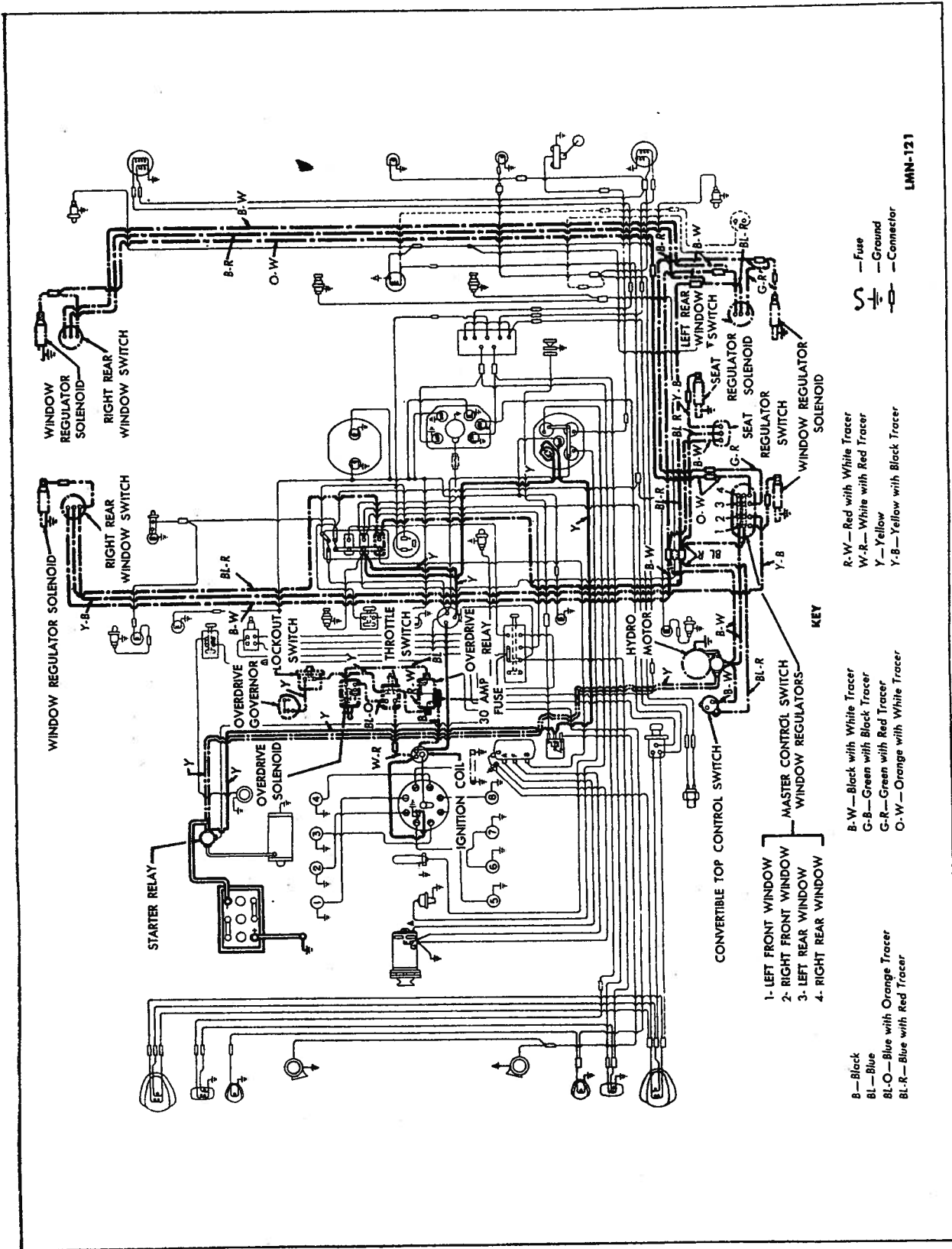
**Series 9L. ALL BODY STYLES**



**1949 LINCOLN SCHEMATIC WIRING DIAGRAM**  
 HEAD LIGHTS, HI-BEAM INDICATOR, ROAD LIGHTS, REAR LIGHTS, LICENSE PLATE LIGHT, LUGGAGE COMPARTMENT LIGHT, PARKING LIGHT, IGNITION LIGHT, INSTRUMENT PANEL CLUSTER LIGHTS AND CONVERTIBLE DOME LIGHT CIRCUITS

# WIRING 1949 LINCOLN

## Series 9L. ALL BODY STYLES



LMN-121

**1949 LINCOLN SCHEMATIC WIRING DIAGRAM**  
**OVERDRIVE, HYDRAULIC WINDOW AND SEAT REGULATION AND CONVERTIBLE TOP CONTROL CIRCUITS**

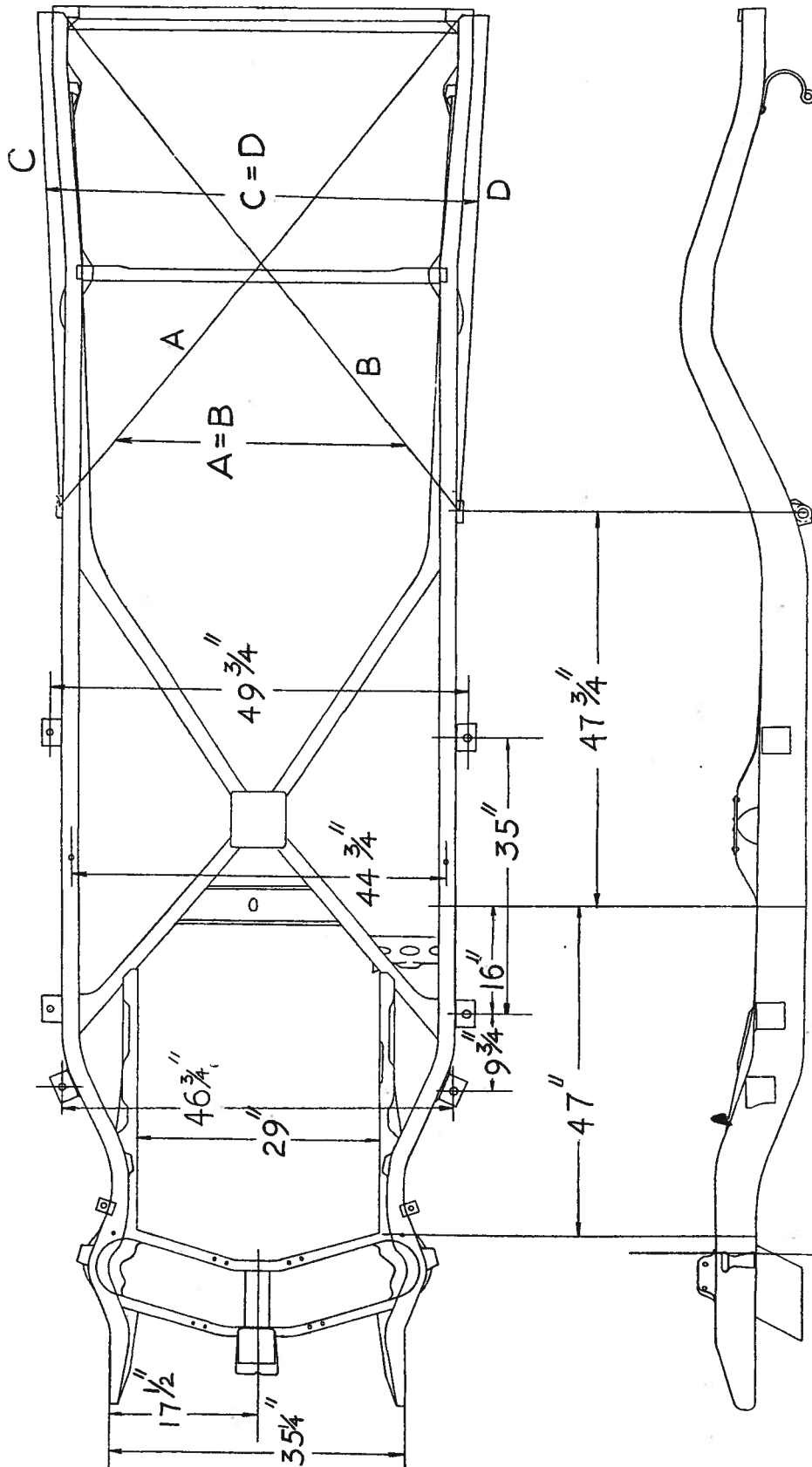
- KEY**
- B-W—Black with White Tracer
  - G-B—Green with Black Tracer
  - G-R—Green with Red Tracer
  - O-W—Orange with White Tracer
  - R-W—Red with White Tracer
  - W-R—White with Red Tracer
  - Y—Yellow
  - Y-B—Yellow with Black Tracer
- Fuse
  - Ground
  - Connector

- 1- LEFT FRONT WINDOW
- 2- RIGHT FRONT WINDOW
- 3- LEFT REAR WINDOW
- 4- RIGHT REAR WINDOW



# LINCOLN 1949 FRAME

## Series 9L. ALL BODY STYLES



1949 Lincoln Frame—121" wheel base